

Minimizing Impact Crash Avoidance

Goals Of This Program:

-  To Develop our perceptual and decision-making process in complex problem solving situations



Minimizing Impact Crash Avoidance

📁 Goals Of This Program:

- 📁 To Develop our perceptual and decision-making process in complex problem solving situations



Minimizing Impact Crash Avoidance

📄 **Goals Of This Program:**

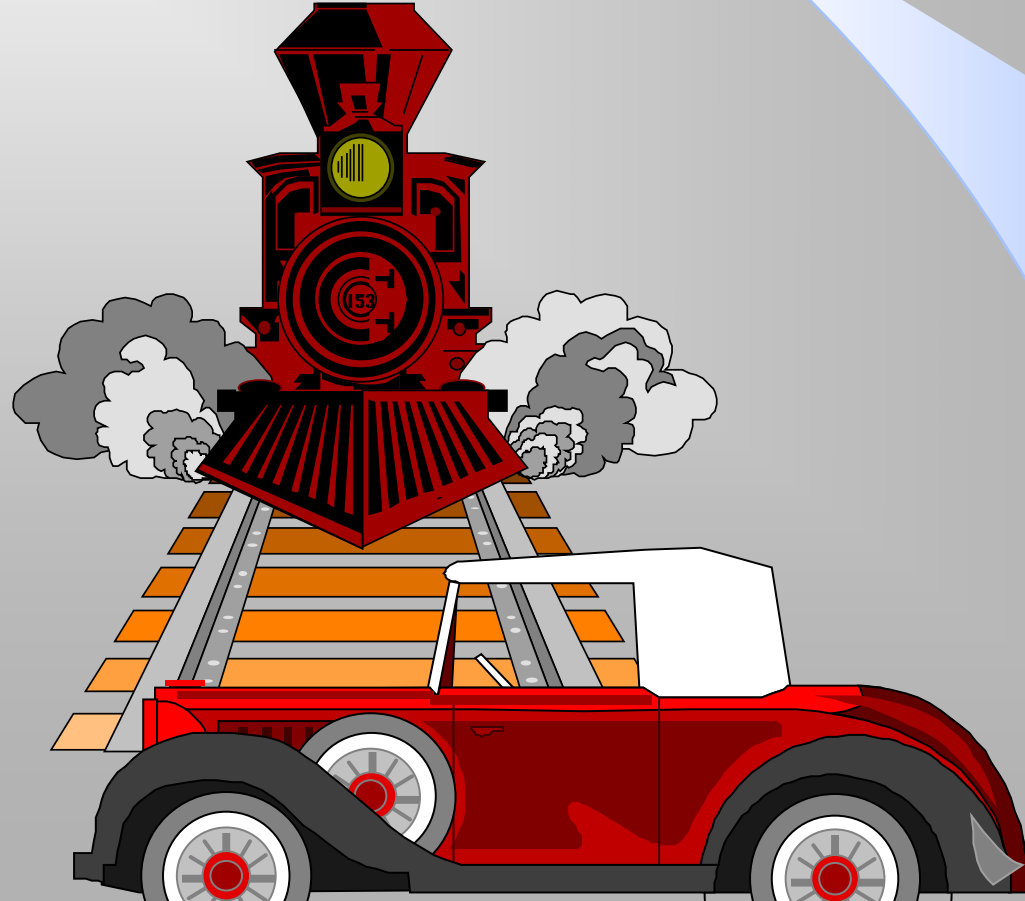
- 📄 To Develop our perceptual and decision-making process in complex problem solving situations



Minimizing Impact Crash Avoidance

📄 Goals Of This Program:

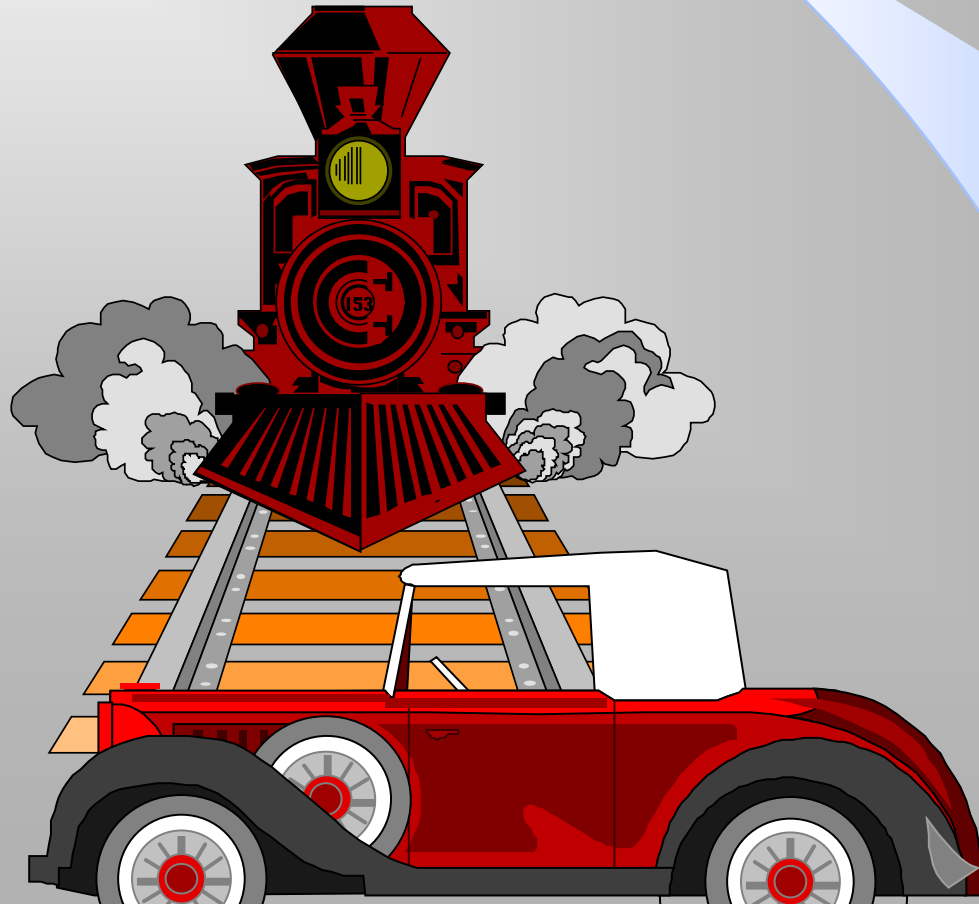
- 📄 To Develop our perceptual and decision-making process in complex problem solving situations



Minimizing Impact Crash Avoidance

📁 Goals Of This Program:

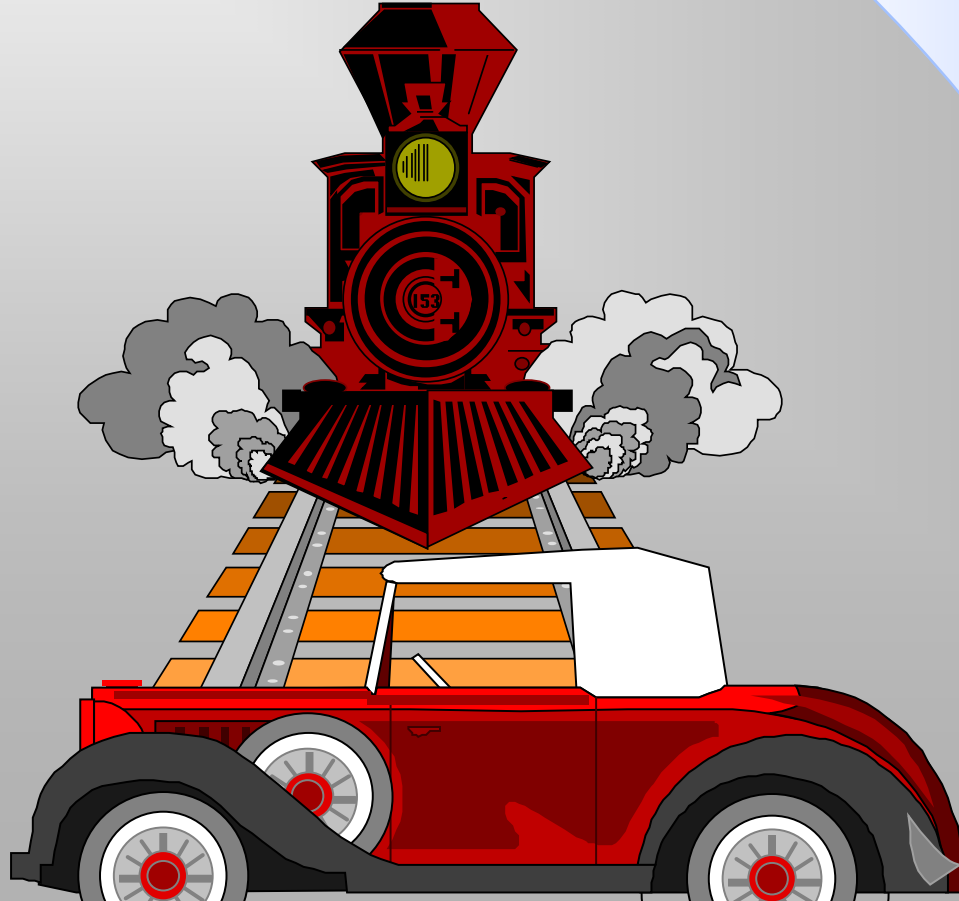
- 📁 To Develop our perceptual and decision-making process in complex problem solving situations



Minimizing Impact Crash Avoidance

📁 Goals Of This Program:

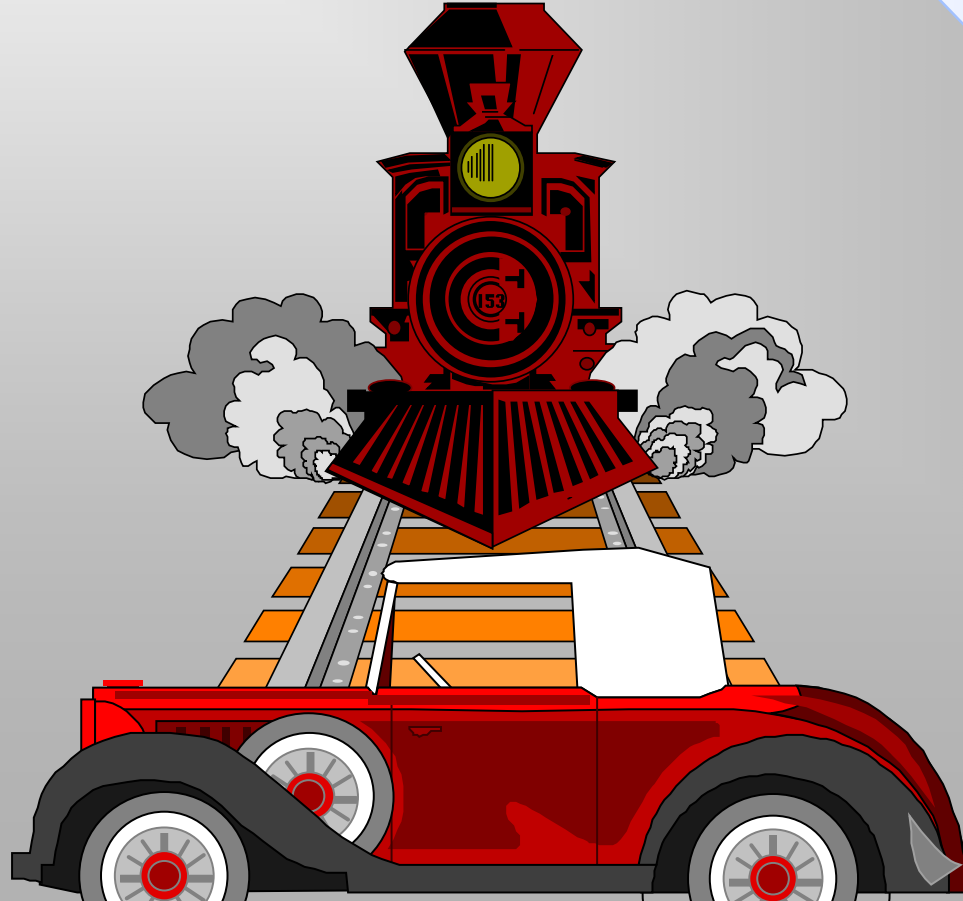
- 📁 To Develop our perceptual and decision-making process in complex problem solving situations



Minimizing Impact Crash Avoidance

📁 Goals Of This Program:

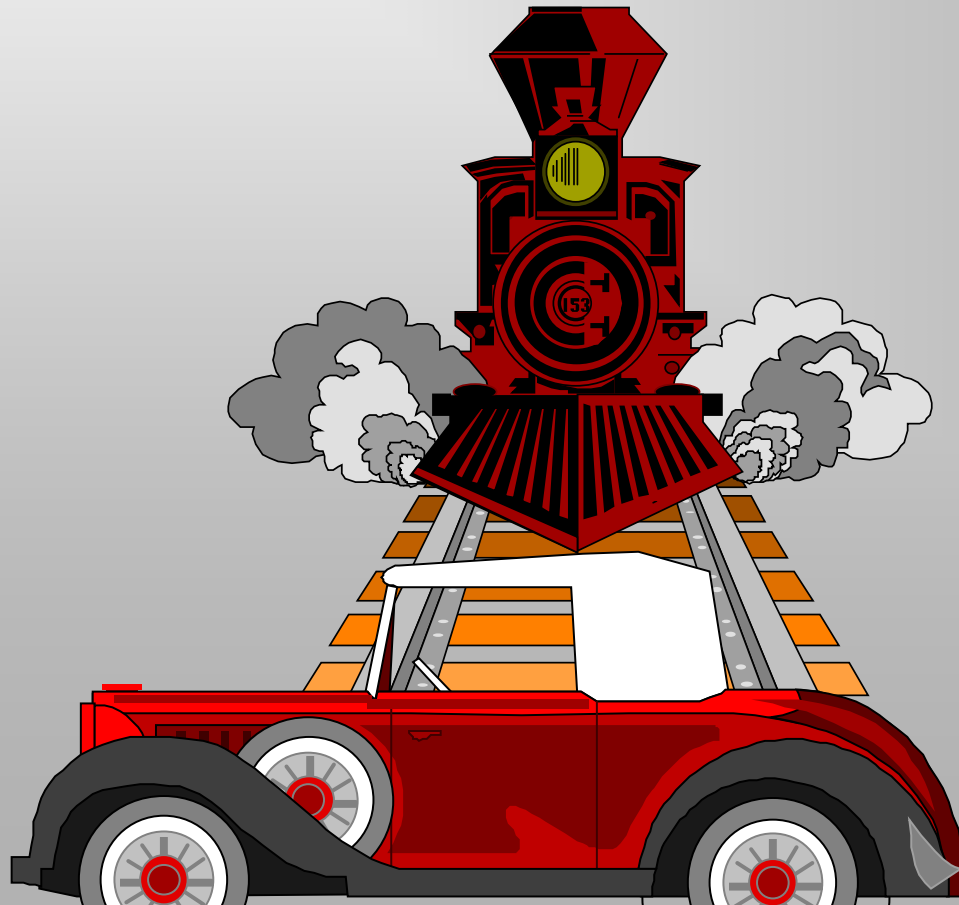
- 📁 To Develop our perceptual and decision-making process in complex problem solving situations



Minimizing Impact Crash Avoidance

📁 Goals Of This Program:

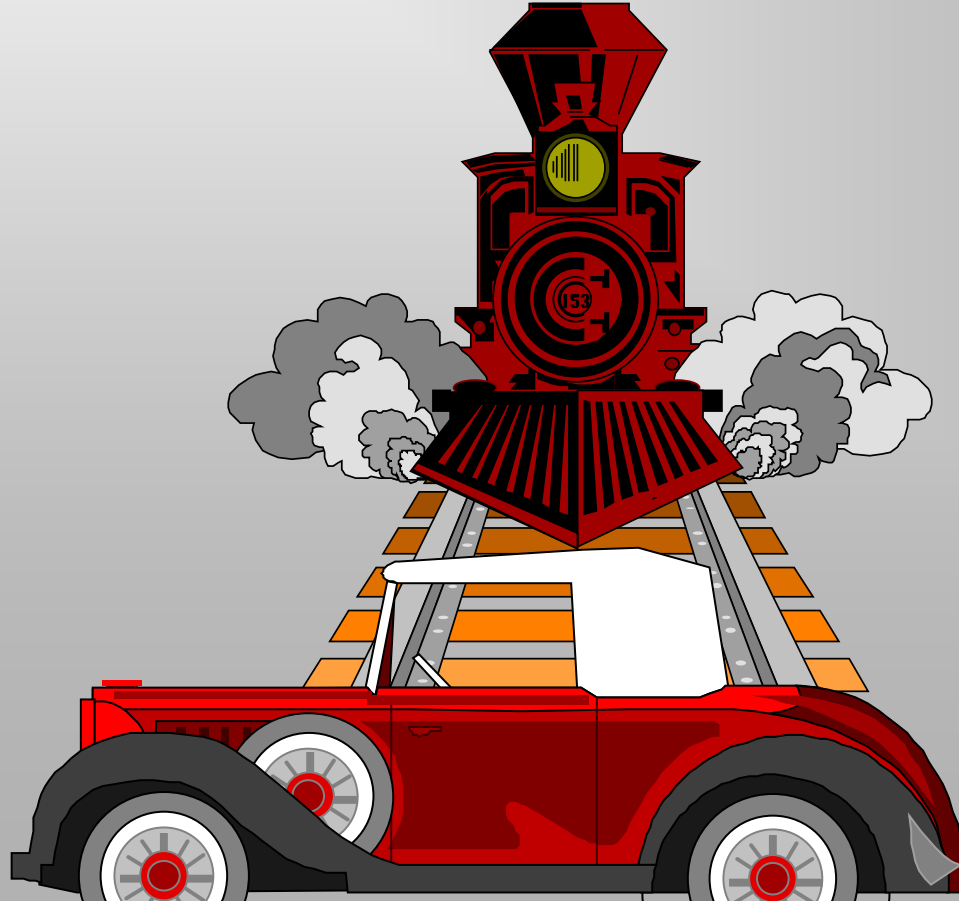
- 📁 To Develop our perceptual and decision-making process in complex problem solving situations



Minimizing Impact Crash Avoidance

📄 Goals Of This Program:

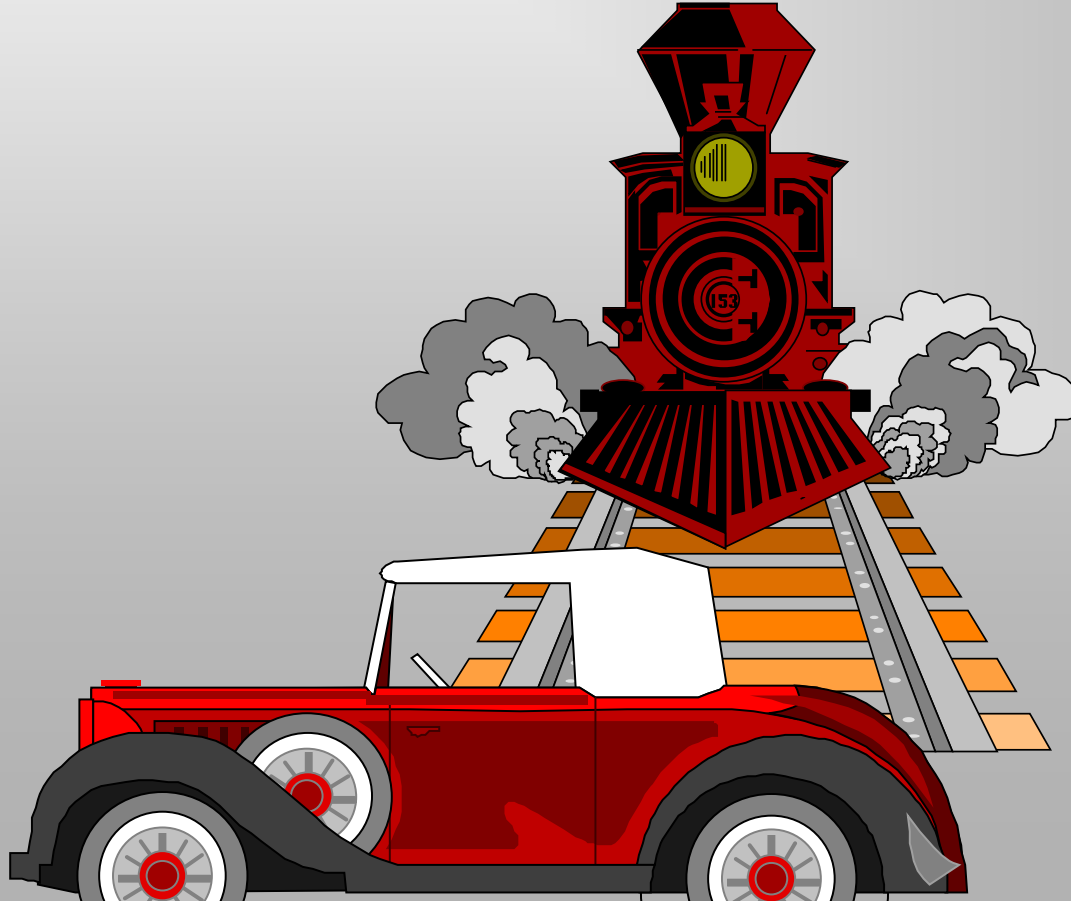
- 📄 To Develop our perceptual and decision-making process in complex problem solving situations



Minimizing Impact Crash Avoidance

📁 Goals Of This Program:

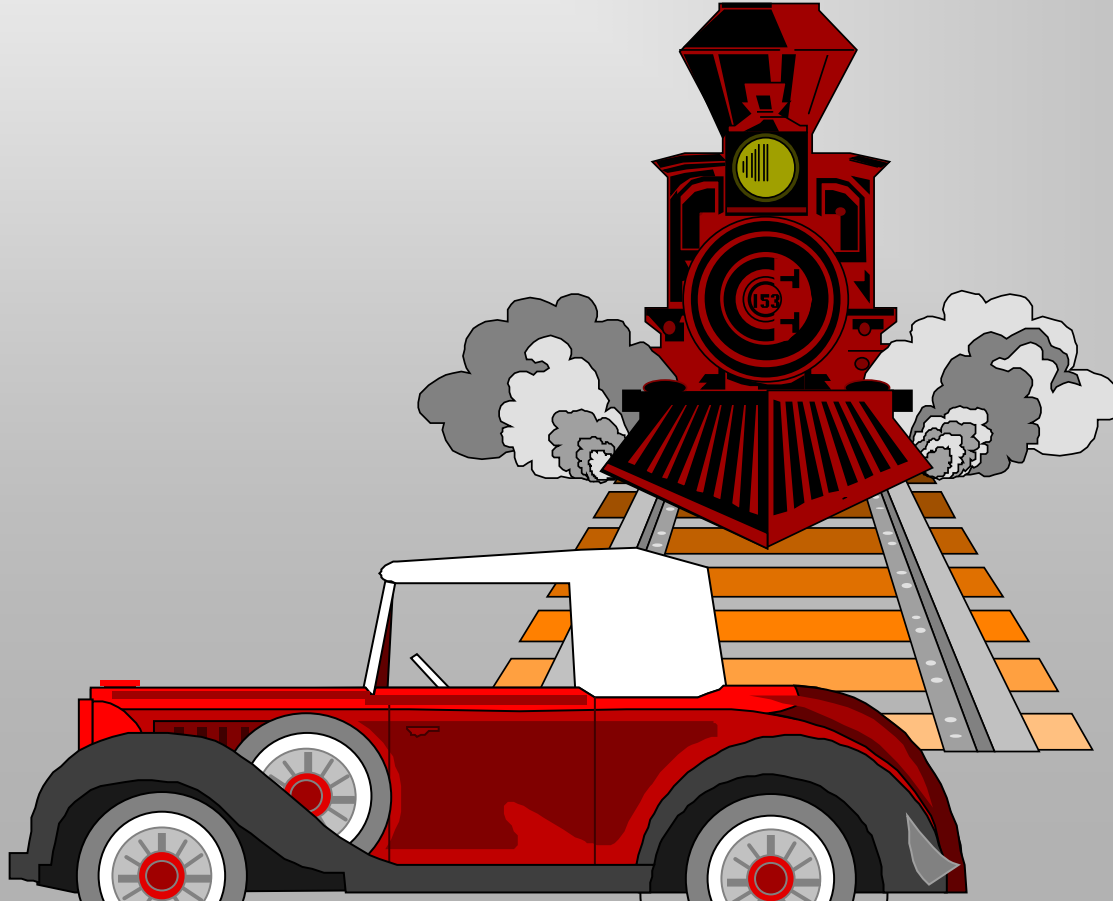
- 📁 To Develop our perceptual and decision-making process in complex problem solving situations



Minimizing Impact Crash Avoidance

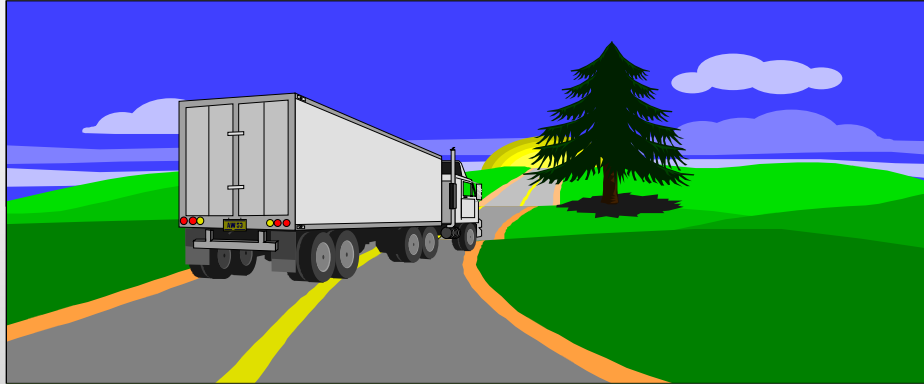
📁 Goals Of This Program:

- 📁 To Develop our perceptual and decision-making process in complex problem solving situations

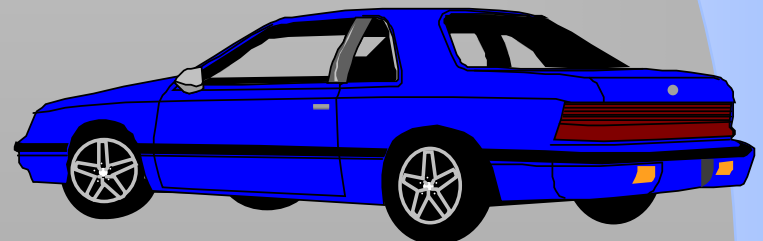
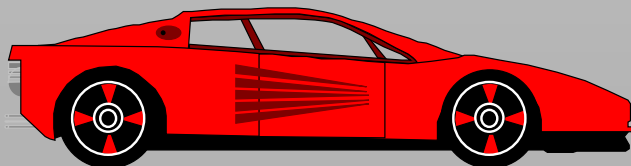


Minimizing Impact Crash Avoidance

📁 Goals Of This Program:



- 📁 Complex situations may include:
- 📁 speed, position, adjustments to visibility, vehicle malfunction, limited traction and environmental distractions



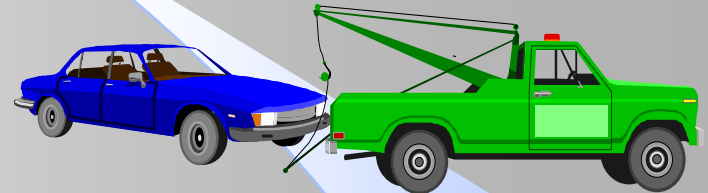
WHAT'S THE PROBLEM?

WHAT COULD WE HAVE DONE?

98% OF ALL ACCIDENTS COULD HAVE BEEN AVOIDED.

2 % ARE THE RESULT OF MALFUNCTIONS.

VEHICLE



Minimizing Impact and
Crash Avoidance

Techniques will include:

- Preventive Measures
 - pre-drive
 - maintenance
 - trouble shooting
- General Procedures
 - control you
 - control car
 - use escape route

WHAT'S THE PROBLEM?

WHAT COULD WE HAVE DONE?

98% OF ALL ACCIDENTS COULD HAVE BEEN AVOIDED.

2 % ARE THE RESULT OF VEHICLE MALFUNCTIONS.

Minimizing Impact and Crash Avoidance

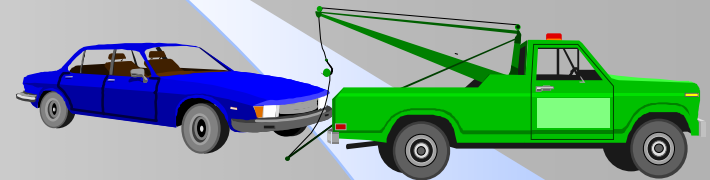
Techniques will include:

☑ Preventive Measures

- pre-drive
- maintenance
- trouble shooting

☑ General Procedures

- control you
- control car
- use escape route



- ☑ Steering
- ☑ Braking
- ☑ Accelerating

WHAT TO USE AND WHEN !

☑ BRAKE AND HOLD

- ☑ No available Escape Path

☑ ACCELERATE

- ☑ Braking and /or Escaping Not An Option
- ☑ Cross Traffic At Intersection Example
- ☑ Passing Maneuver Example

☑ ESCAPE LEFT

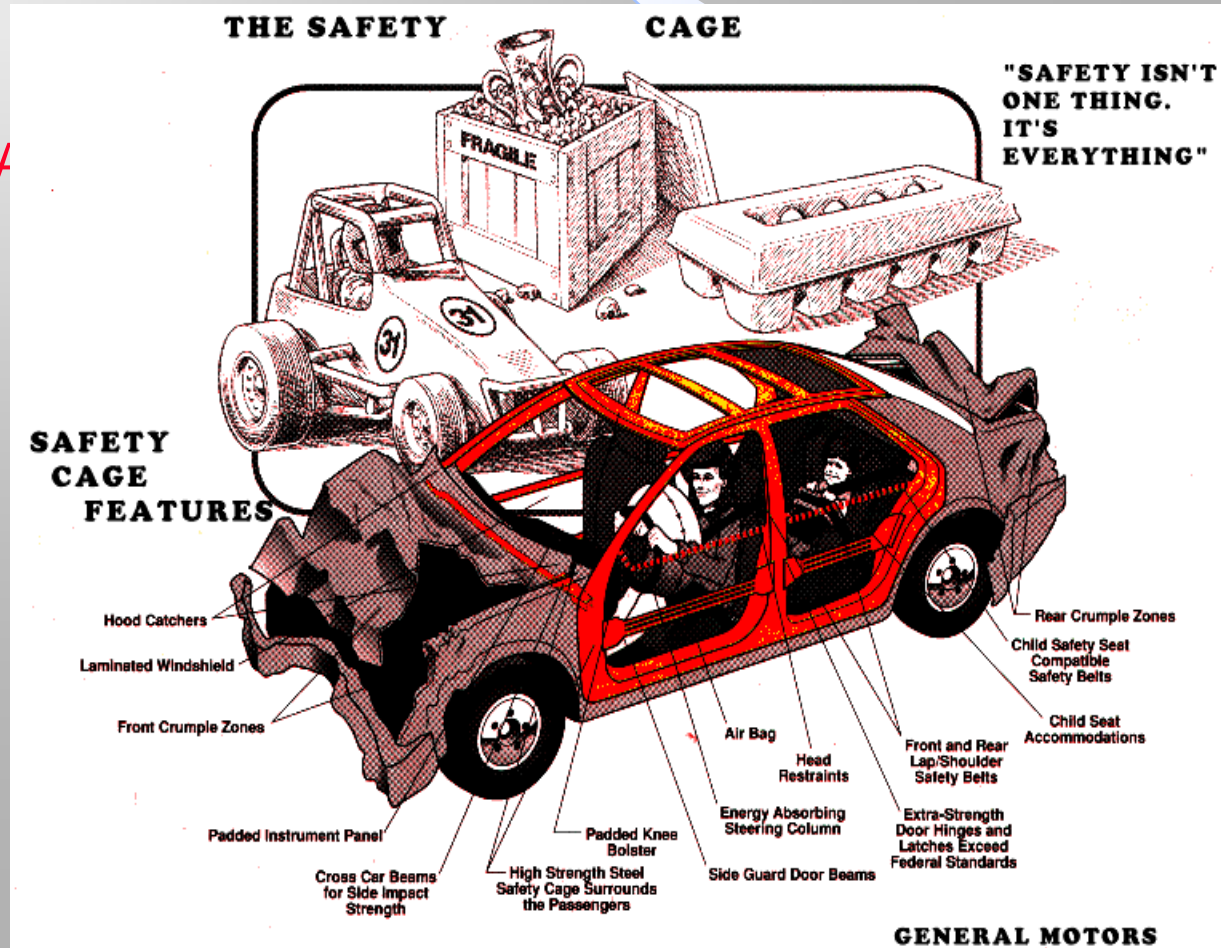
- ☑ Must Be 100% Sure Of Open Zone
- ☑ Threat Of The Head-On Collision

☑ ESCAPE RIGHT

MANUFACTURERS HELP IN REDUCING SERIOUS INJURY

CAR SAFETY FEATURES

- SIZE
- SAFETY CAGE
- SAFETY RESTRAINT SYSTEM
- AIR BAGS
- HEAD RESTRAINTS
- INFANT AND CHILD SEAT



MANUFACTURERS HELP IN REDUCING SERIOUS INJURY

CAR SAFETY FEATURES

SIZE

SAFETY CAGE

SAFETY RESTRAINT SYSTEM

AIR BAGS

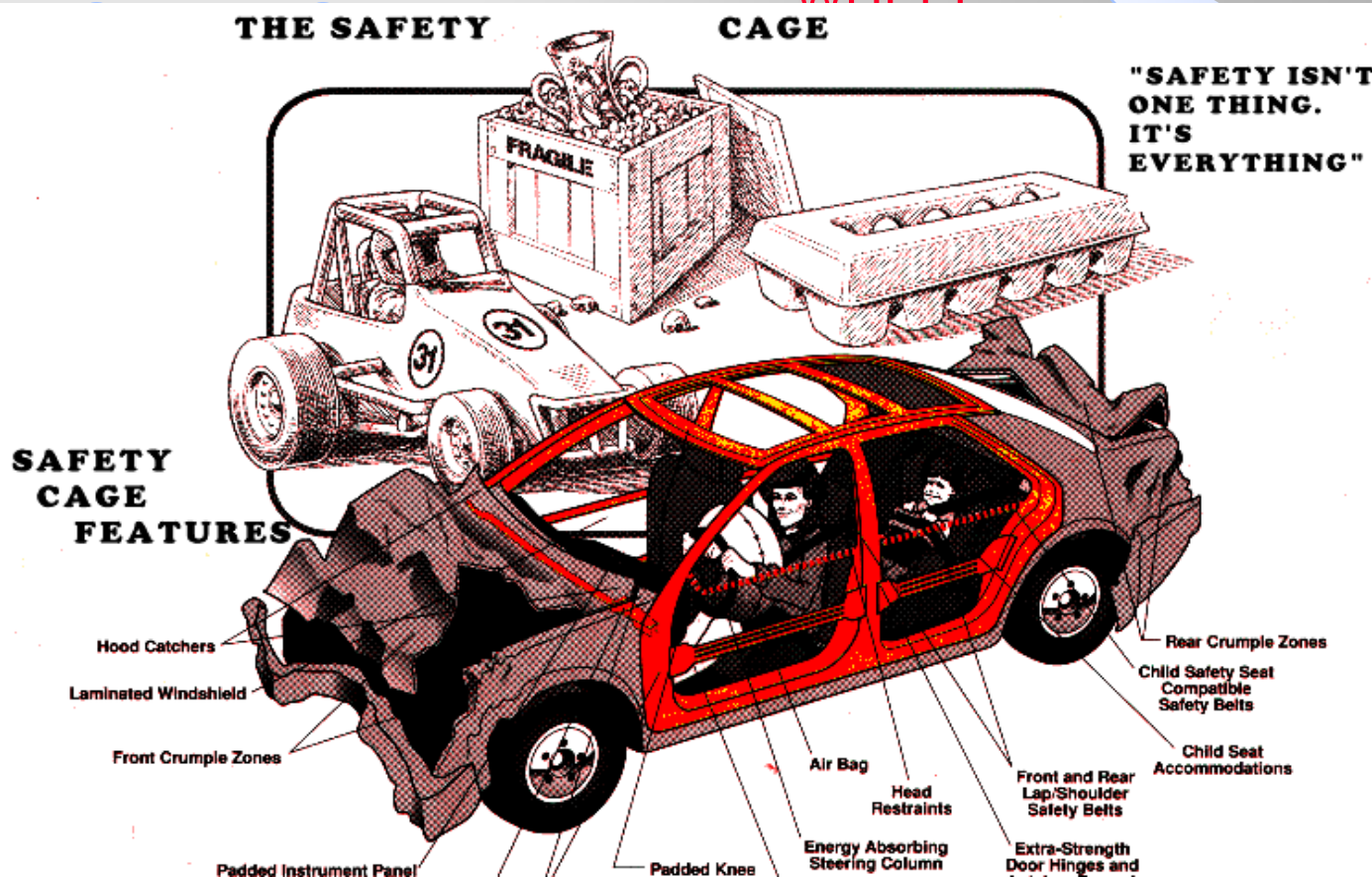
HEAD

INFAN

IMPROVED WINDSHIELD DESIGN

FRONT AND REAR CRUMPLE ZONES

COLLAPSIBLE STEERING WHEEL



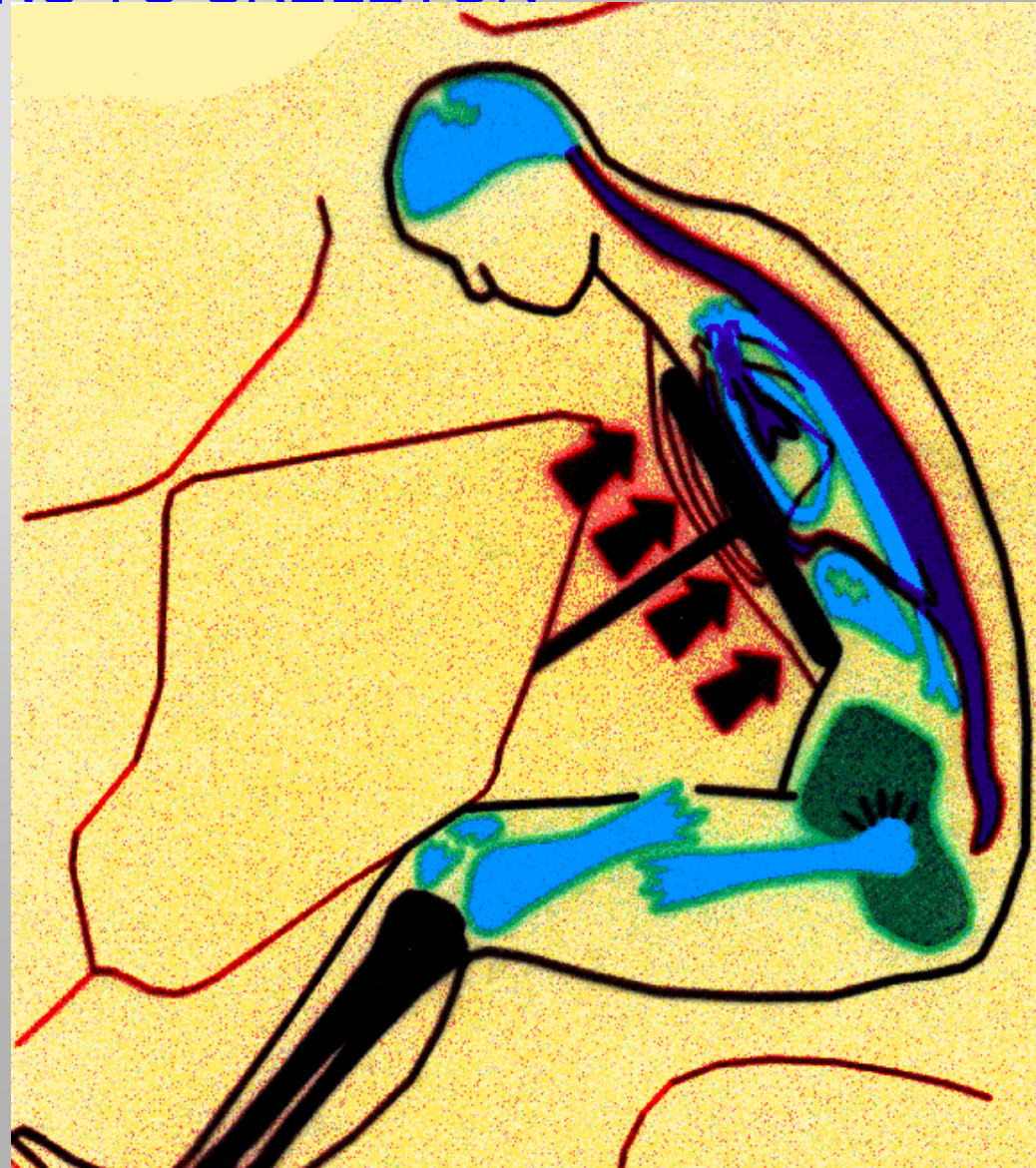
IMPACTS IN A COLLISION:

1ST-VEHICLE TO OUTSIDE OBJECT

2ND-BODY TO STOPPED VEHICLE

3RD-INSIDE ORGANS TO SKELETON

- More than 50% of U.S. drivers do not wear safety belts
- When worn, safety belts reduce deaths by 45% and serious injury by 50%
- 276,000 people die or are seriously injured while sitting in the back seat of an auto



When You Find That You Have Gone “BEYOND THE LIMITS” OF THE VEHICLE

REMEMBER:

- LOCKED BRAKES/WHEELS KEEP YOU FROM
STEERING

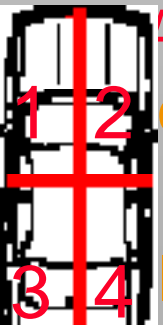
- ALWAYS STEER THE WAY
YOU WANT THE FRONT OF THE CAR TO GO

- WHEN YOU PANIC BRAKE
SKIDDING AND LOSS OF CONTROL CAN OCCUR

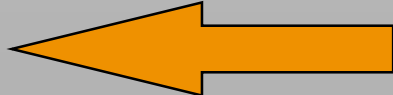
- WHAT SHOULD YOU DO WHEN ITS SLICK?
1) SLOW DOWN 2) EASY ON THE BRAKE

IF CRASH IS IMMINENT HERE

ARE THE 4 ZONES OF PROTECTION



1 2 protect zone #1 up



to the last

3 4 the moment

Minimizing Impact Crash Avoidance



FORCE OF IMPACT AND THE LAWS OF NATURE

- KNOWLEDGE OF THE NATURAL LAWS SHOULD HELP KEEP YOU OUT OF SITUATIONS WHICH ARE _____
- ONE FORCE THAT WORKS FOR YOU IS _____
- TWO DRIVING SITUATIONS WHERE GRAVITY IS MOST NOTICEABLE
1) _____ 2) _____
- WHAT EFFECT DOES BAD TIRE TREAD HAVE ON FRICTION? _____
- WHAT OTHER FACTORS EFFECT TRACTION? _____
- LIST THE TWO TYPES OF ENERGY 1) _____ 2) _____
- TOO MUCH SPEED WILL OVERRULE NATURAL LAWS OF _____
AND _____

**FACTORS WHICH
INFLUENCE THIS LAW**

1) _____ 2) _____

REMEMBER:

**MASS X VELOCITY
SQUARED = FORCE OF
IMPACT**



MINIMIZING IMPACT AND CRASH AVOIDANCE

RESOURCES INCLUDE:

TRAUMA NURSES TALK TOUGH

GENERAL MOTORS CO.

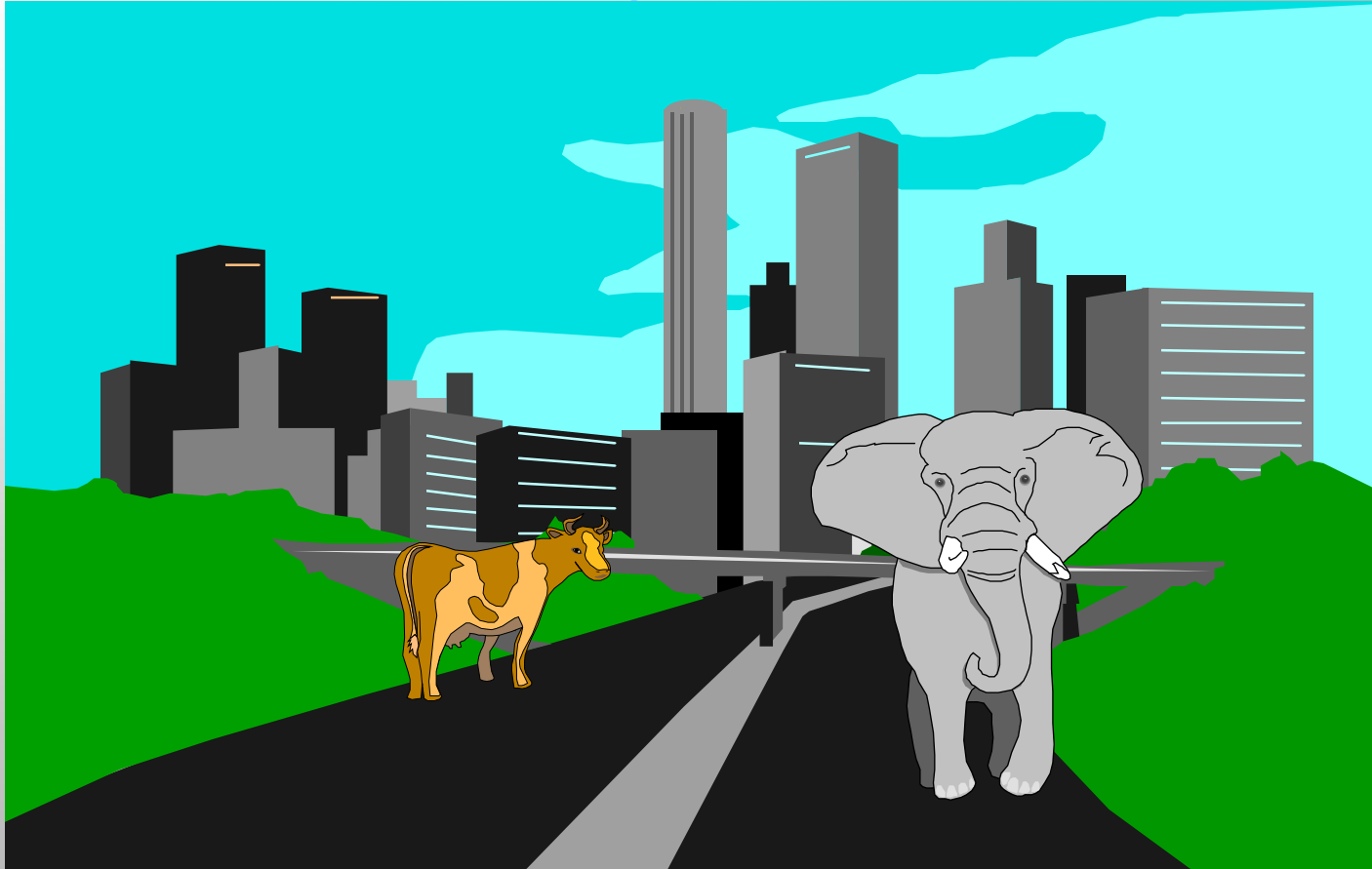
“BEYOND THE LIMITS”

(National Academy for Professional Driving)

“NATURAL LAWS”

(Bumpa-tel Inc.)

Minimizing Impact Crash Avoidance



📅 To become aware of potential areas of high risk situations