

PASSING

PASSING AND BEING PASSED

PASSING

WHEN OVERTAKING AND PASSING ANOTHER VEHICLE TRAVELING IN THE SAME DIRECTION ON A TWO-LANE ROAD, YOU SHOULD PASS ONLY ON THE LEFT SIDE OF THE VEHICLE.

- PASSING IS ONE THE MOST DANGEROUS MANEUVERS YOU CAN MAKE.
- BASICALLY YOU ARE MAKING TWO LANE CHANGES.

BEFORE PASSING ANOTHER VEHICLE

ASK YOURSELF THREE QUESTIONS

- IS IT SAFE?
- IS IT LEGAL?
- IS IT NECESSARY?

IS IT SAFE?

- IT MAY BE LEGAL, BUT NOT SAFE!
- CONSIDER THE FOLLOWING:
- WEATHER CONDITIONS!
- ROAD CONDITIONS!
- HAZARDS ALONG THE ROAD -SUCH AS:
- CHILDREN PLAYING AND OTHER DISTRACTIONS!

- REMEMBER THE THE FOLLOWING:
- WHEN IN DOUBT, DO NOT PASS!

IS IT LEGAL?

- YOU CANNOT PASS UNDER THE FOLLOWING CONDITIONS.

DO NOT PASS

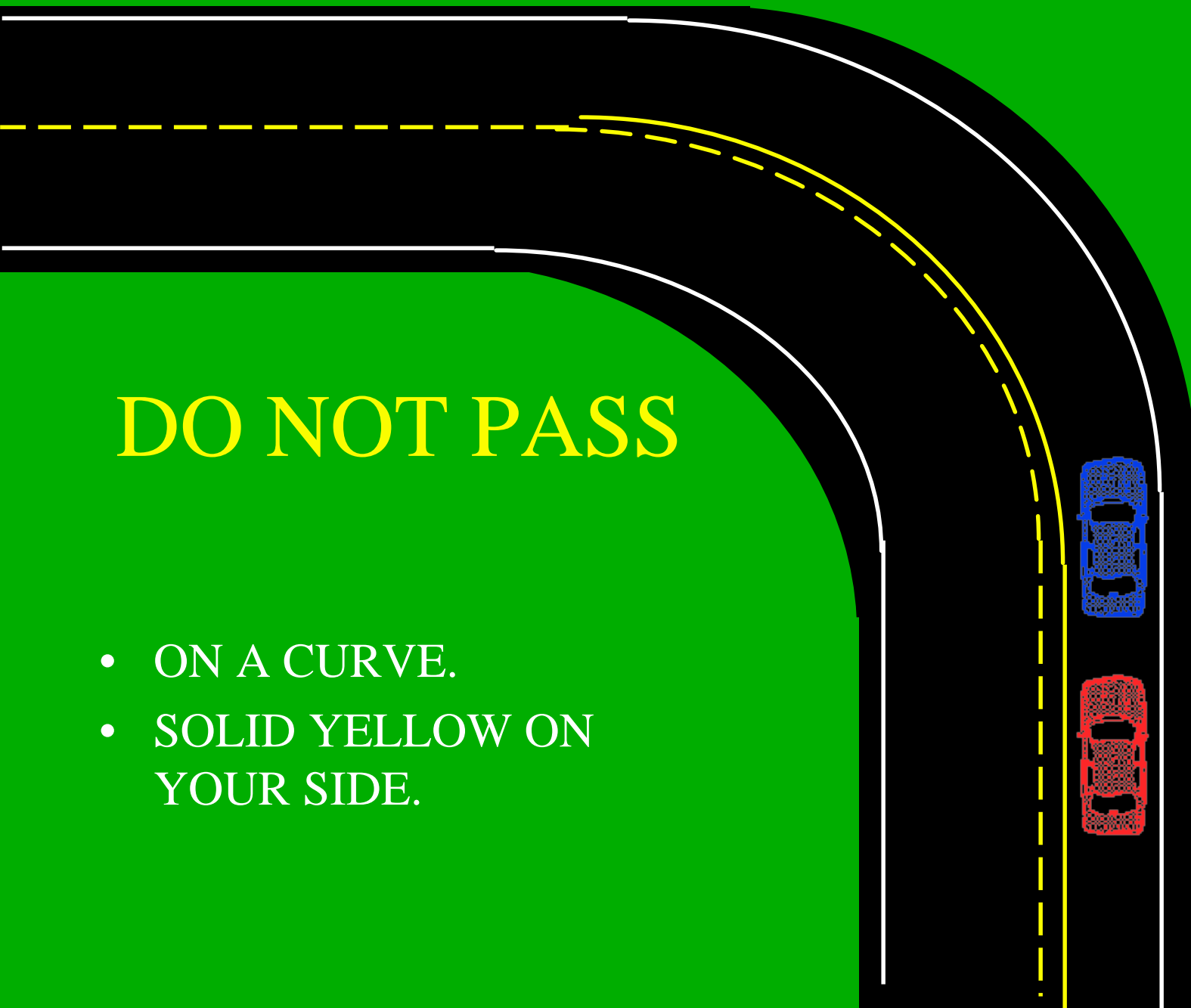


- NEAR THE CREST OF A HILL.
- NOTICE SOLID YELLOW LINE ON YOUR SIDE!

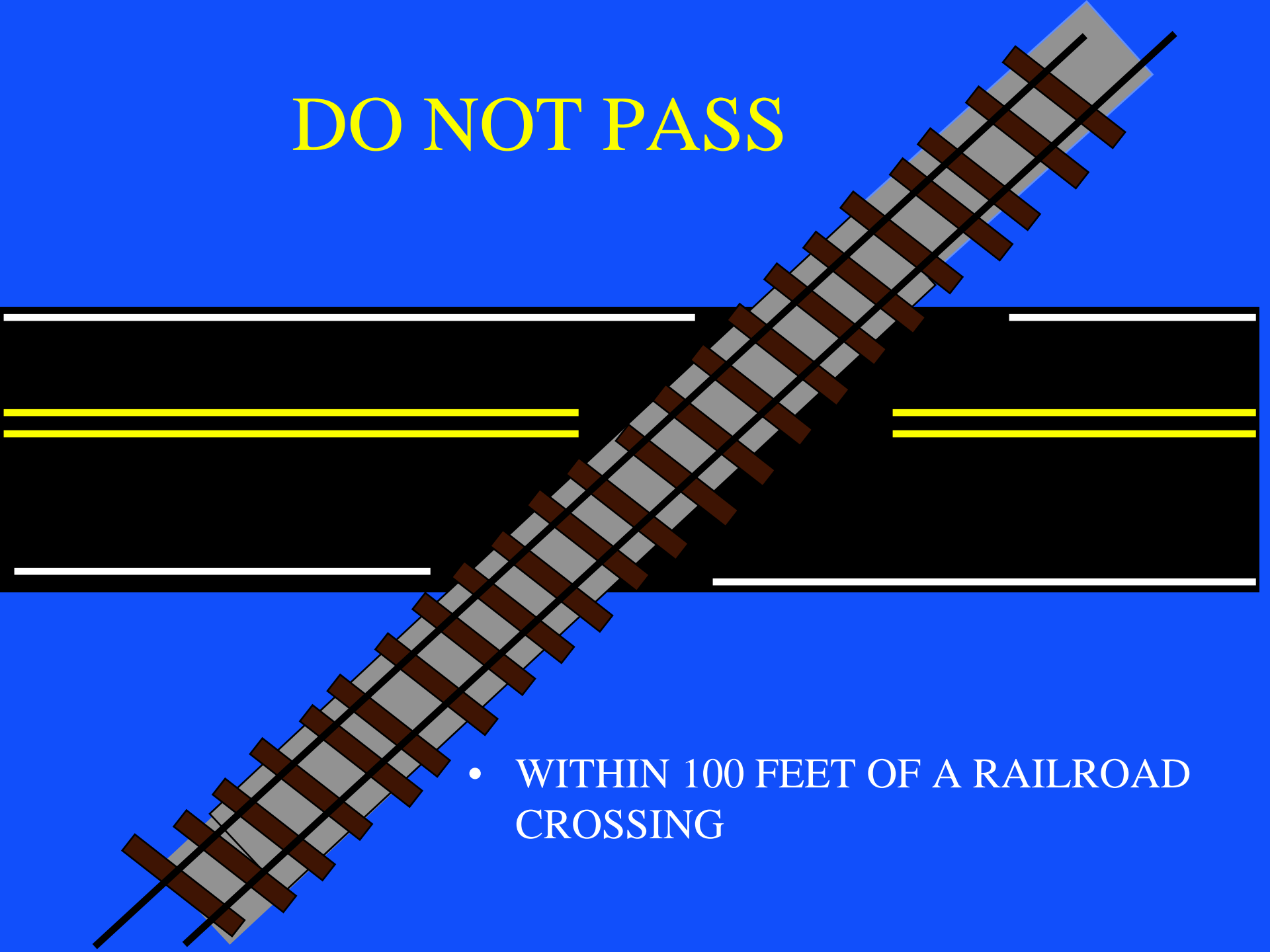


DO NOT PASS

- ON A CURVE.
- SOLID YELLOW ON YOUR SIDE.



DO NOT PASS



- WITHIN 100 FEET OF A RAILROAD CROSSING

DO NOT PASS



- WITHIN 100 FEET OF AN INTERSECTION

DO NOT PASS

- WITH BARRIER LINES



DO NOT PASS

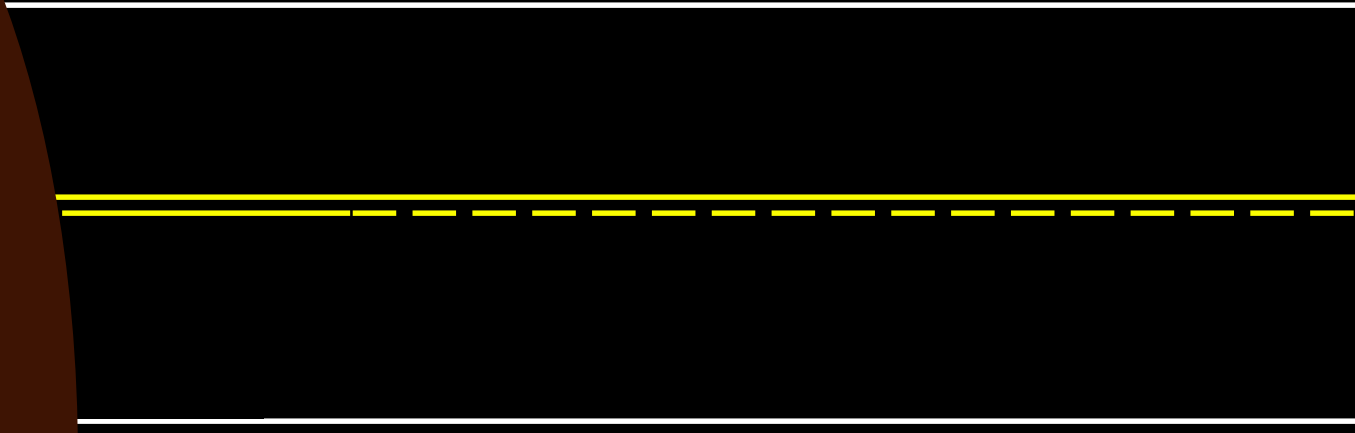
- WITHIN 100 FEET OF A BRIDGE

Under or near an overpass

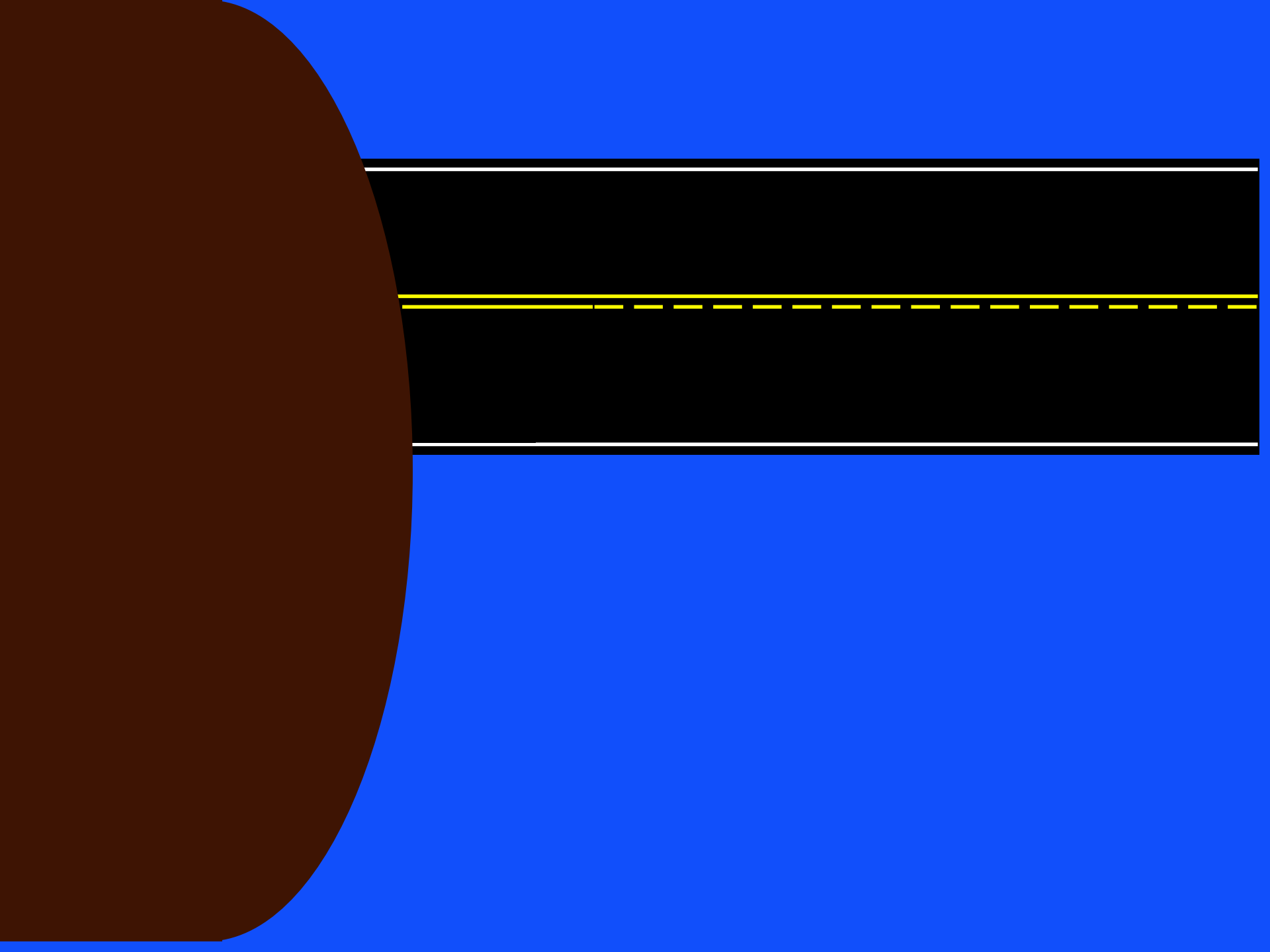
- Unlawful if:
- within 100 feet and your view is blocked

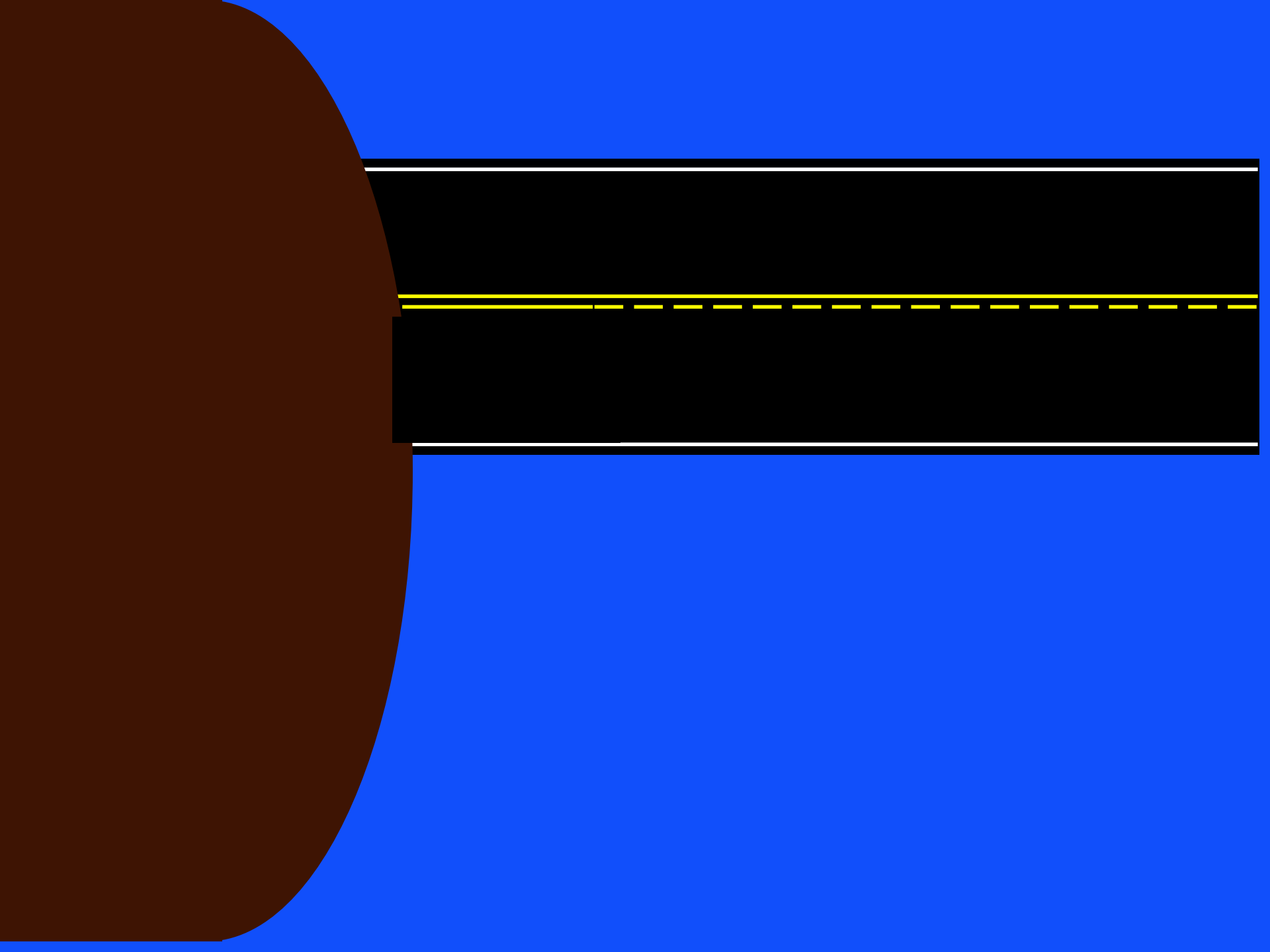


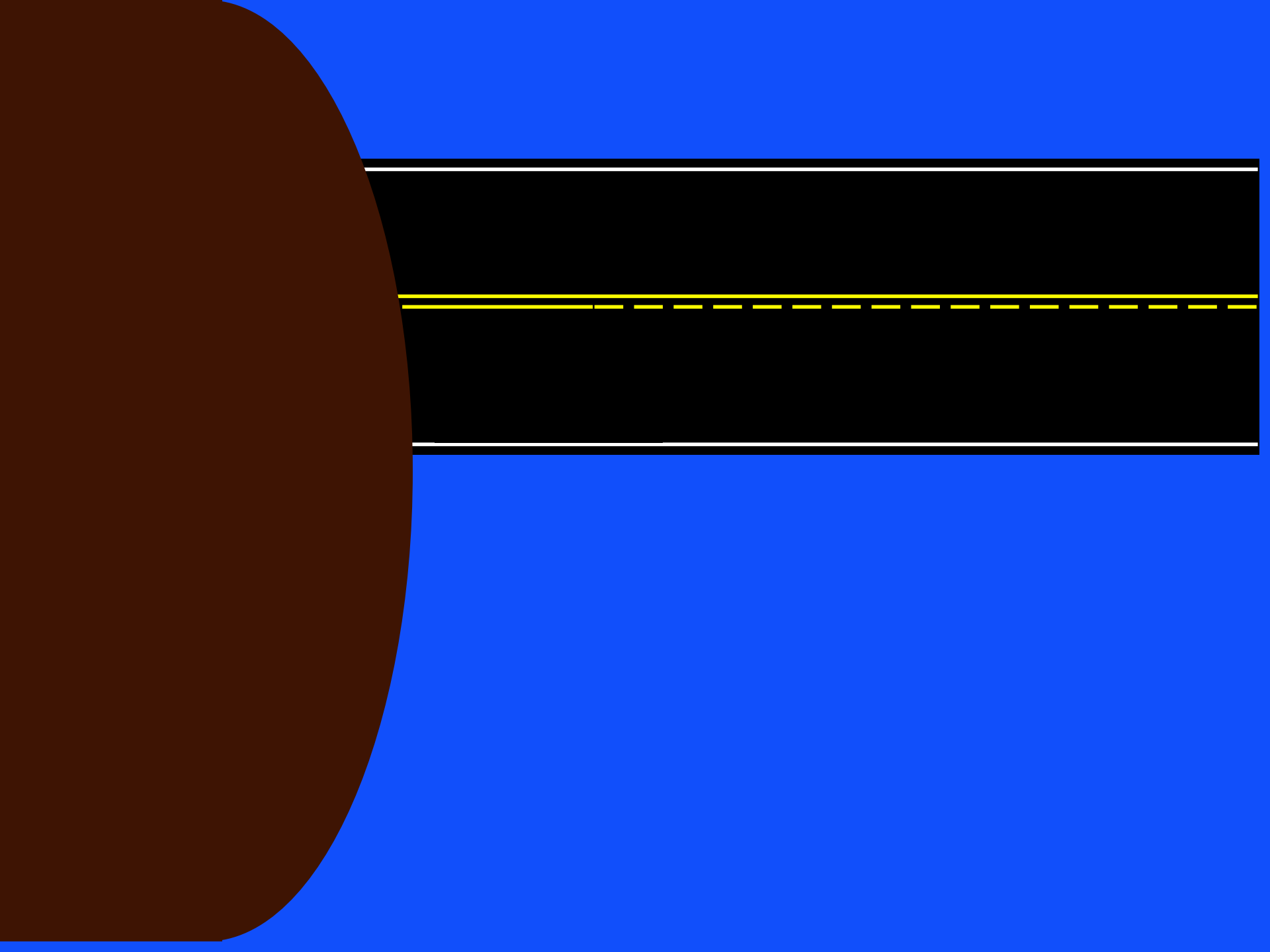
DO NOT PASS

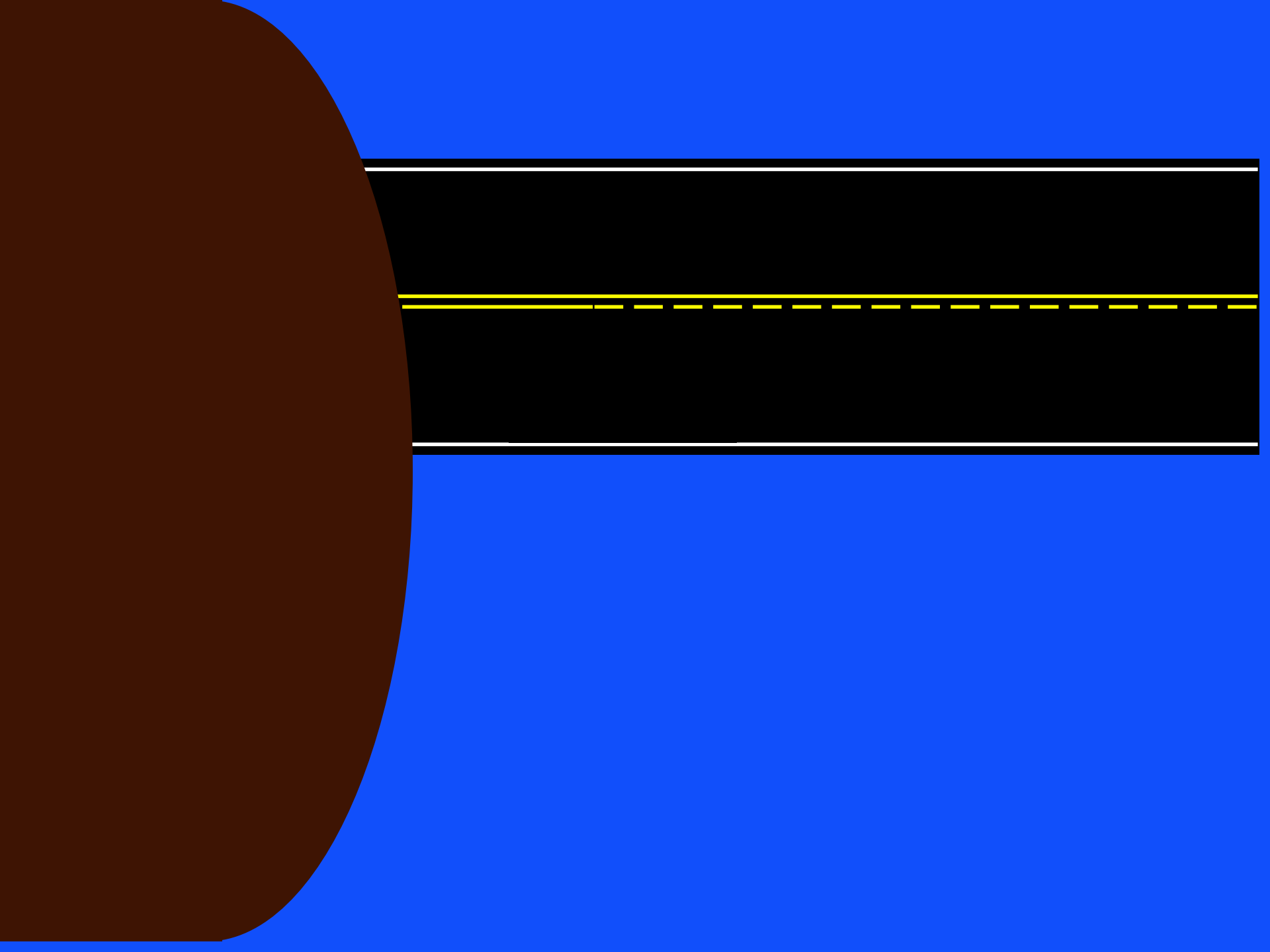


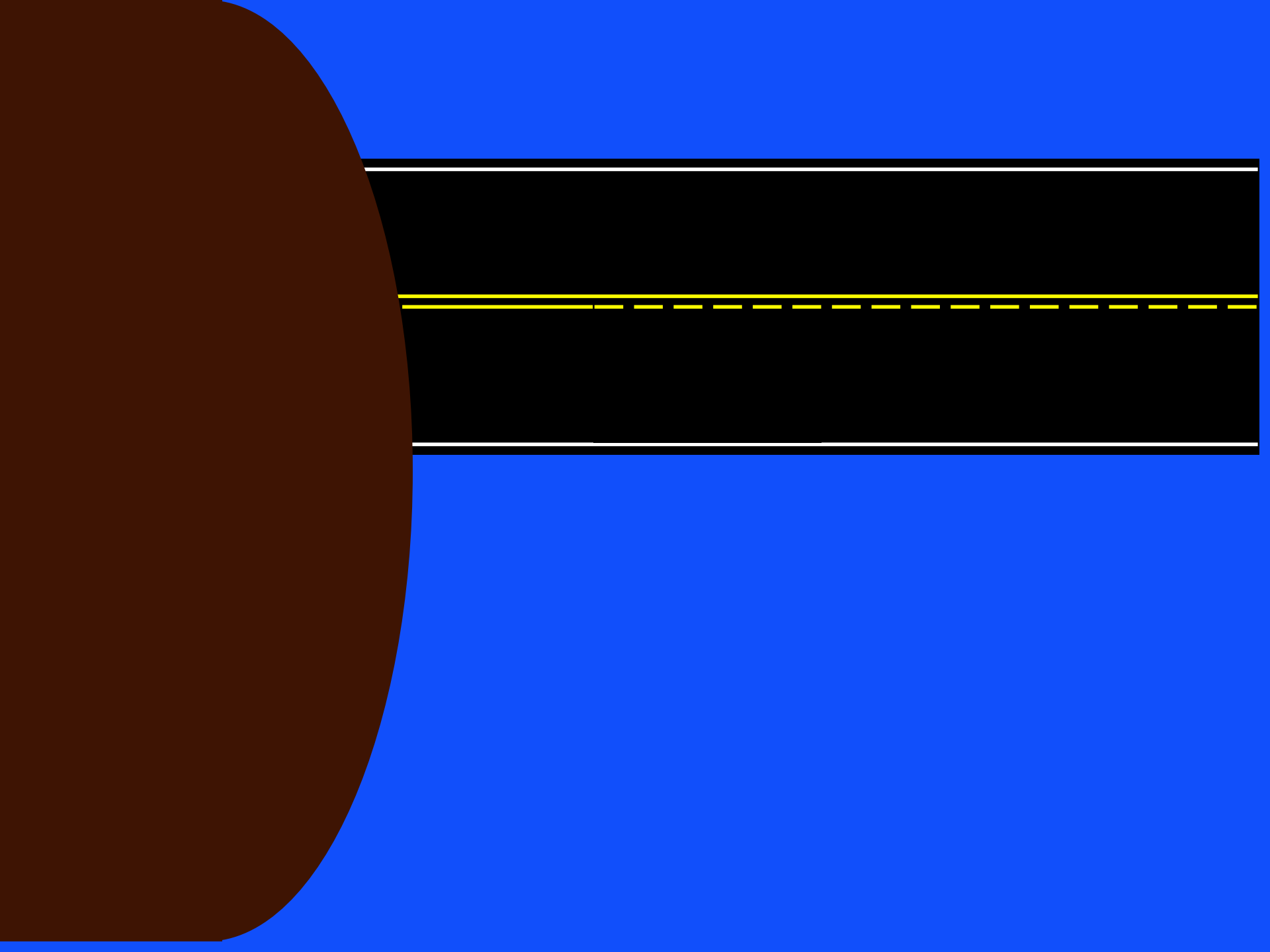
- WITHIN 100 FEET OF A TUNNEL

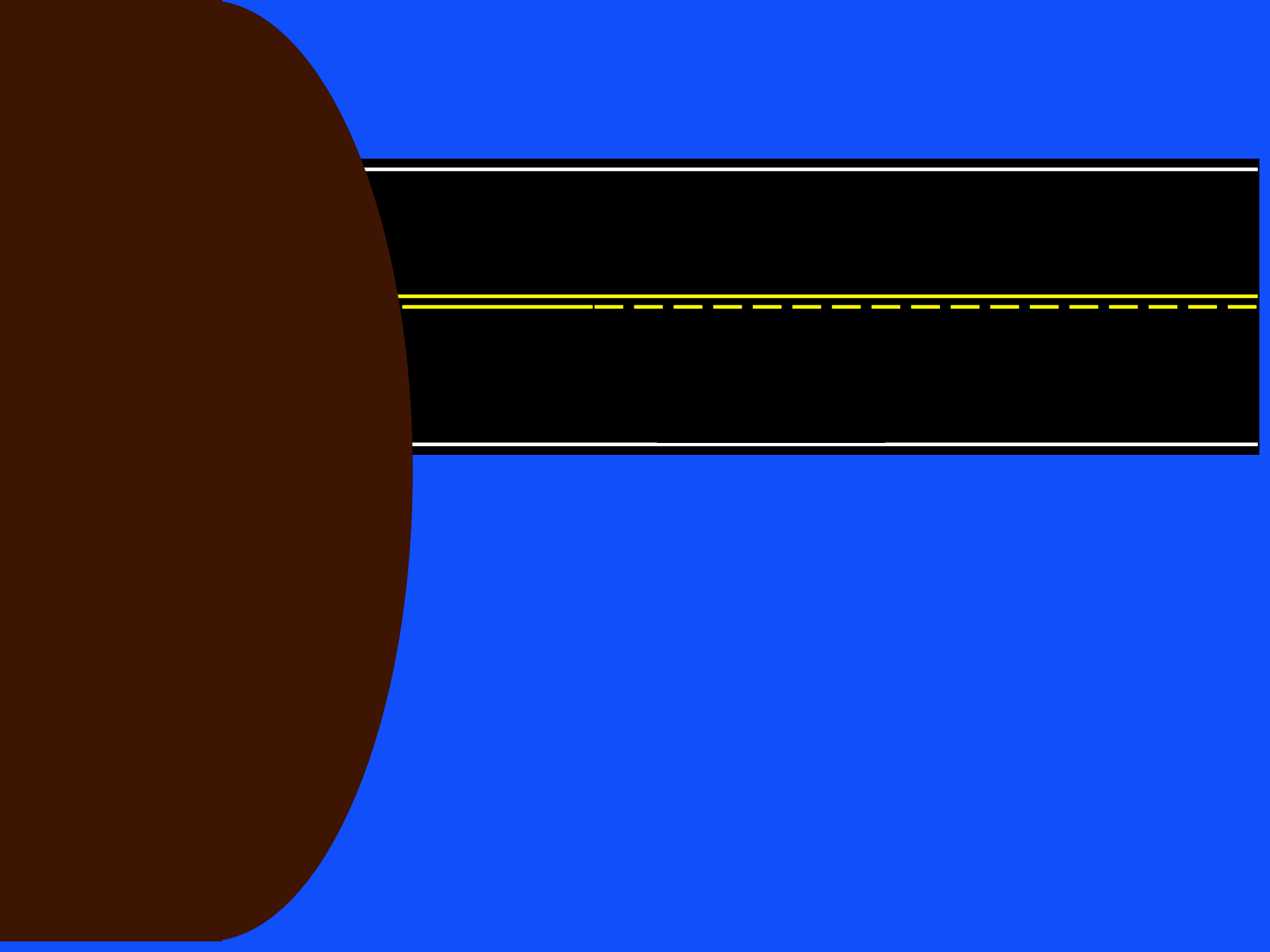


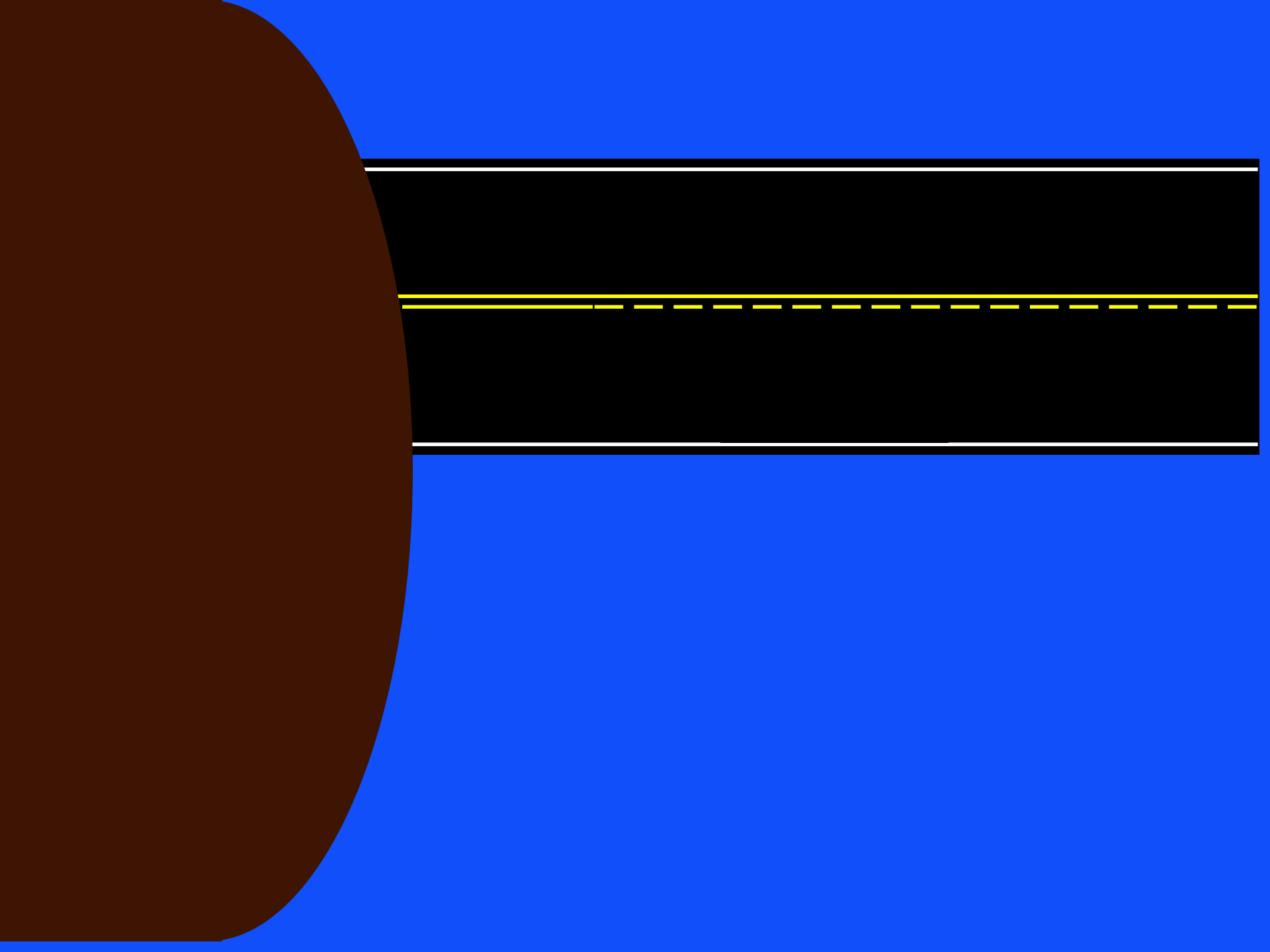


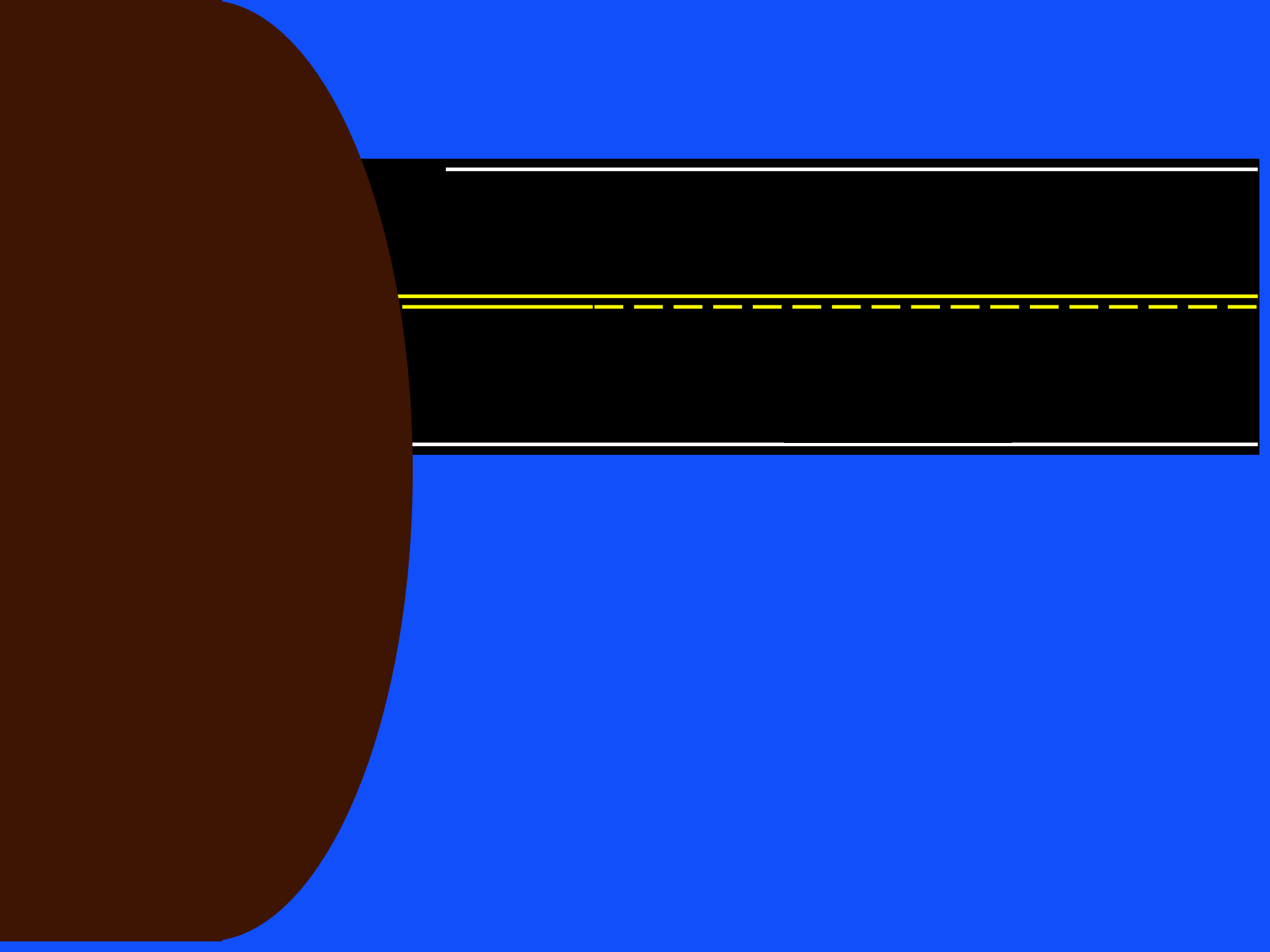


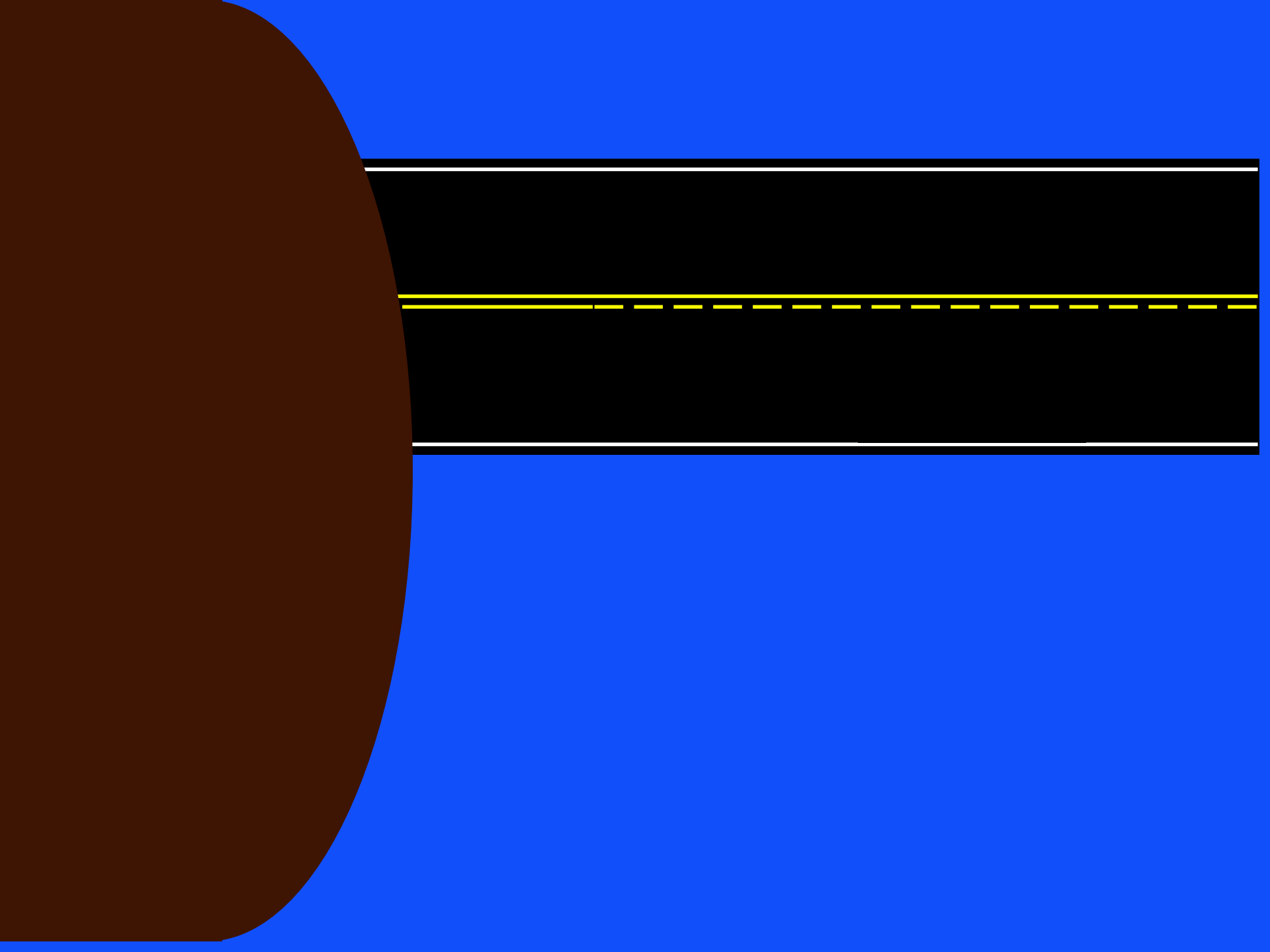


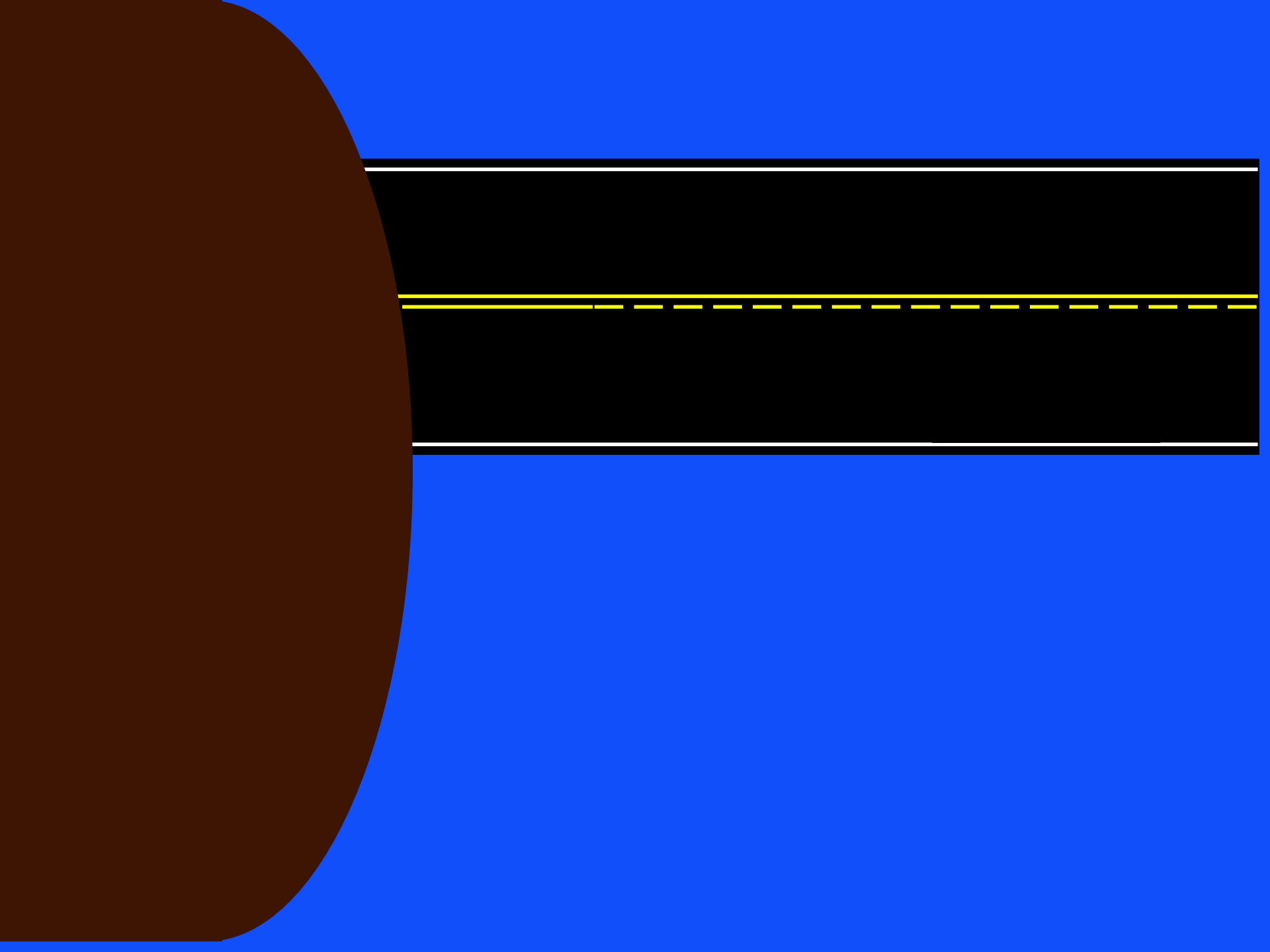






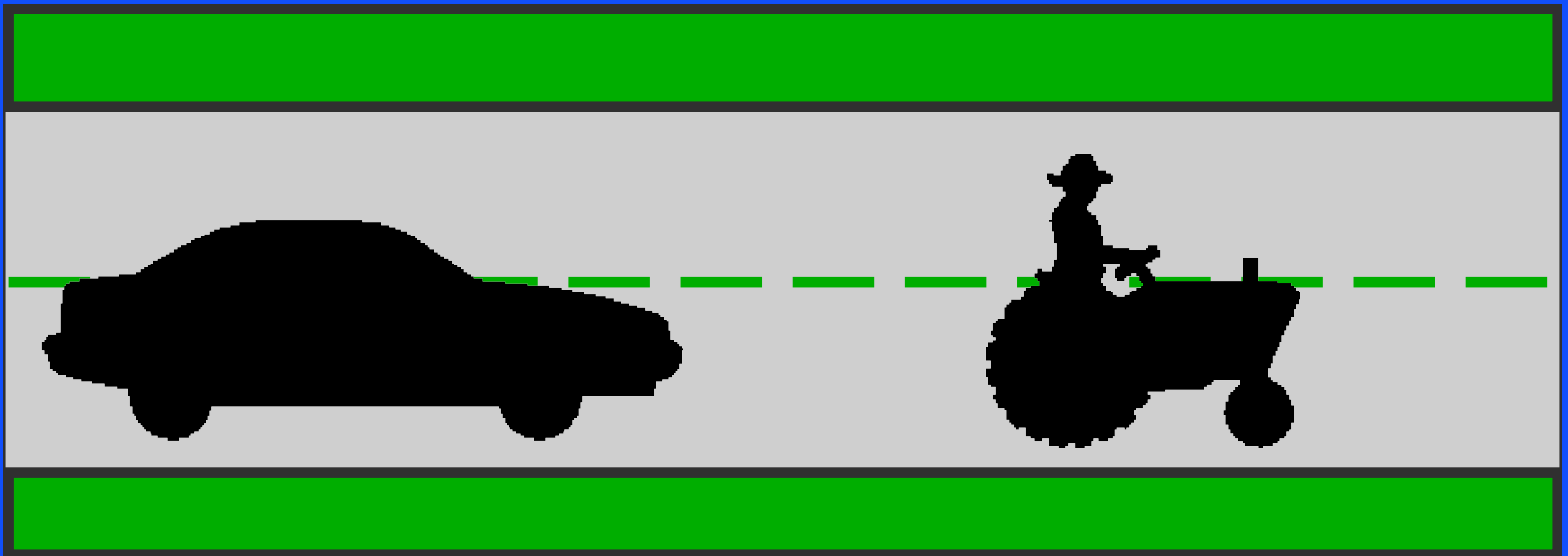






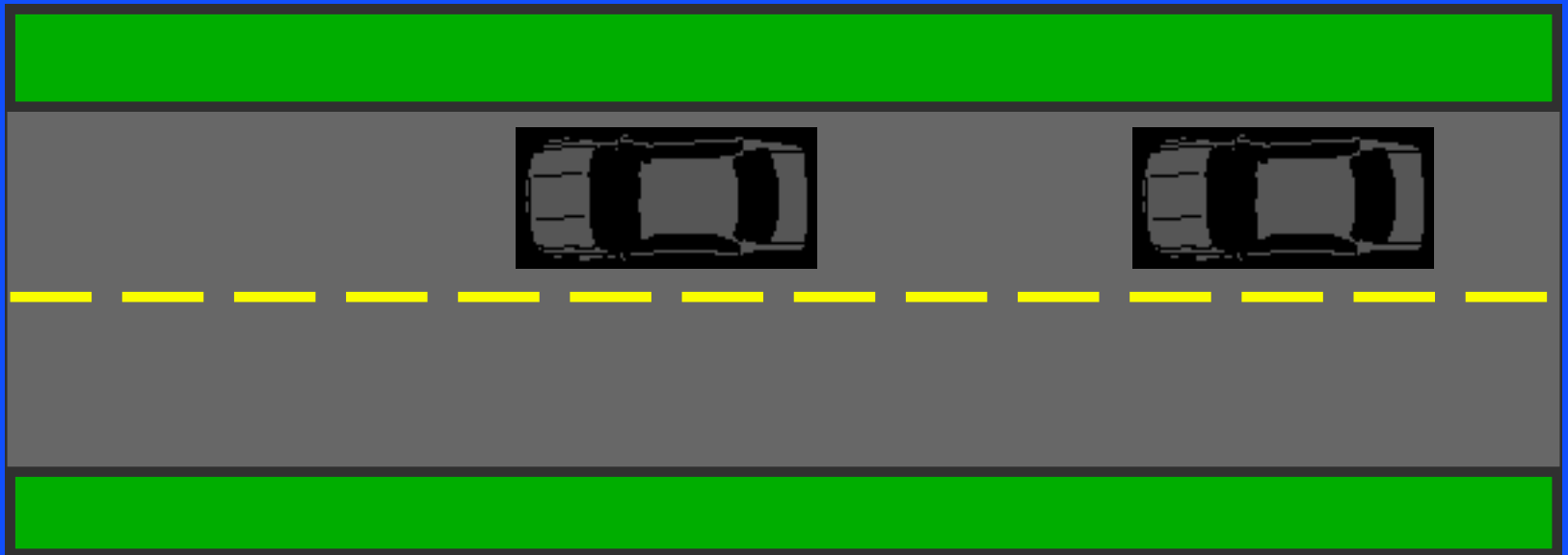
Following a tractor

- Better to pass when safe
- Not passing could cause congestion



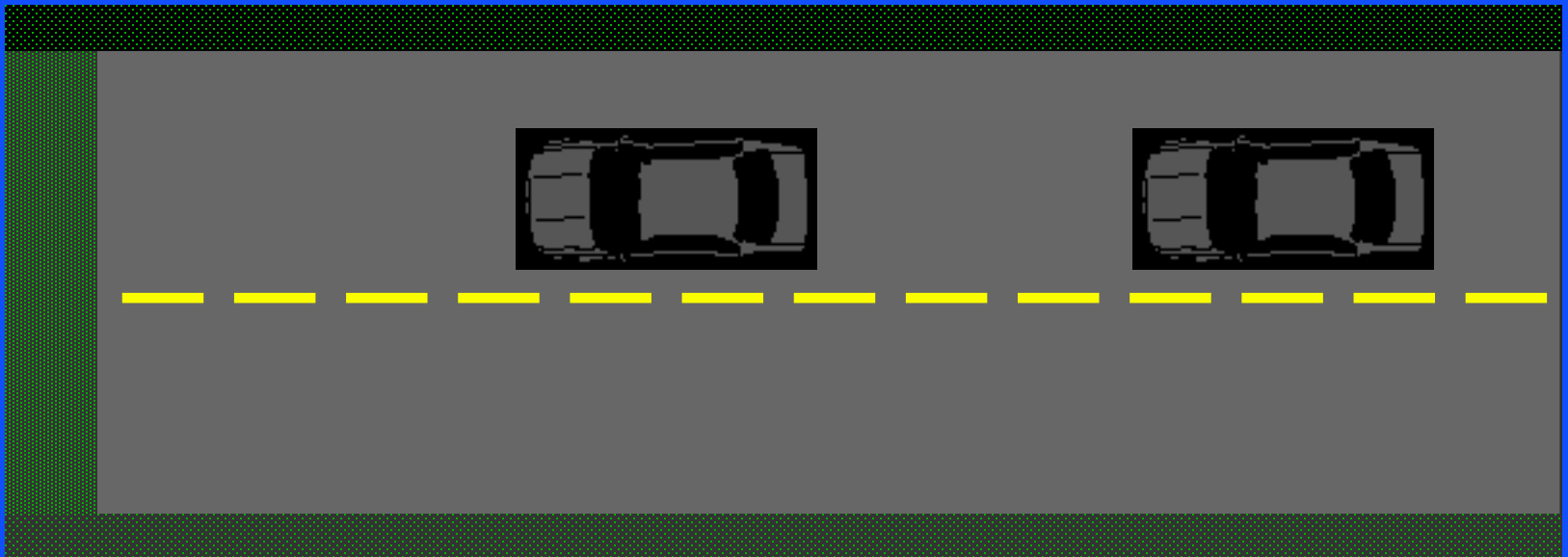
Car ahead under the speed limit

- Better to pass when safe
- Not passing could cause congestion



On or near a bridge

- Illegal to pass if:
- your view is block within 100 feet



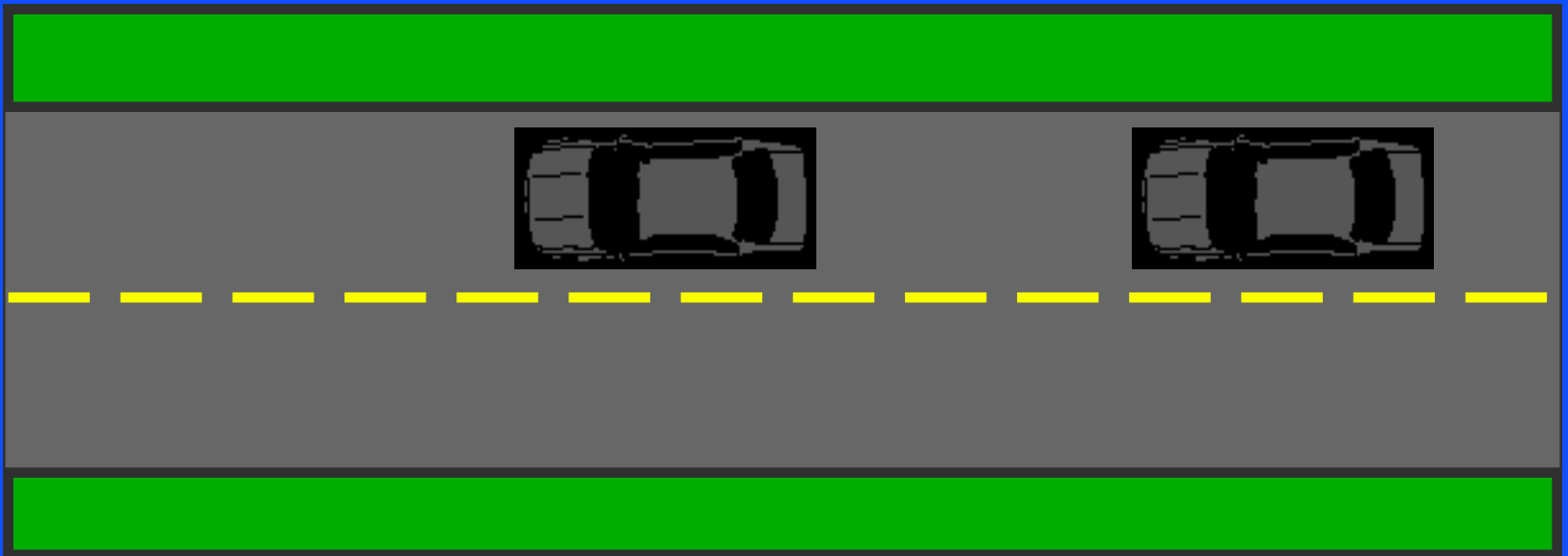
Near the front of a pack of cars

- Better to pass when safe
- Not passing could cause congestion



Your engine 's not running well

- Better not to pass
- Might stall or be unable to accelerate

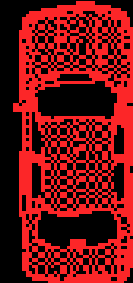
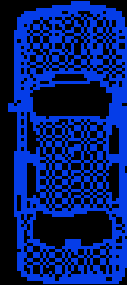


DO NOT PASS

THIS SIGN IS ON
THE LEFT SIDE OF
THE ROADWAY



- IN NO PASSING ZONES
- INDICATED BY A LINE
- OR BY SIGN



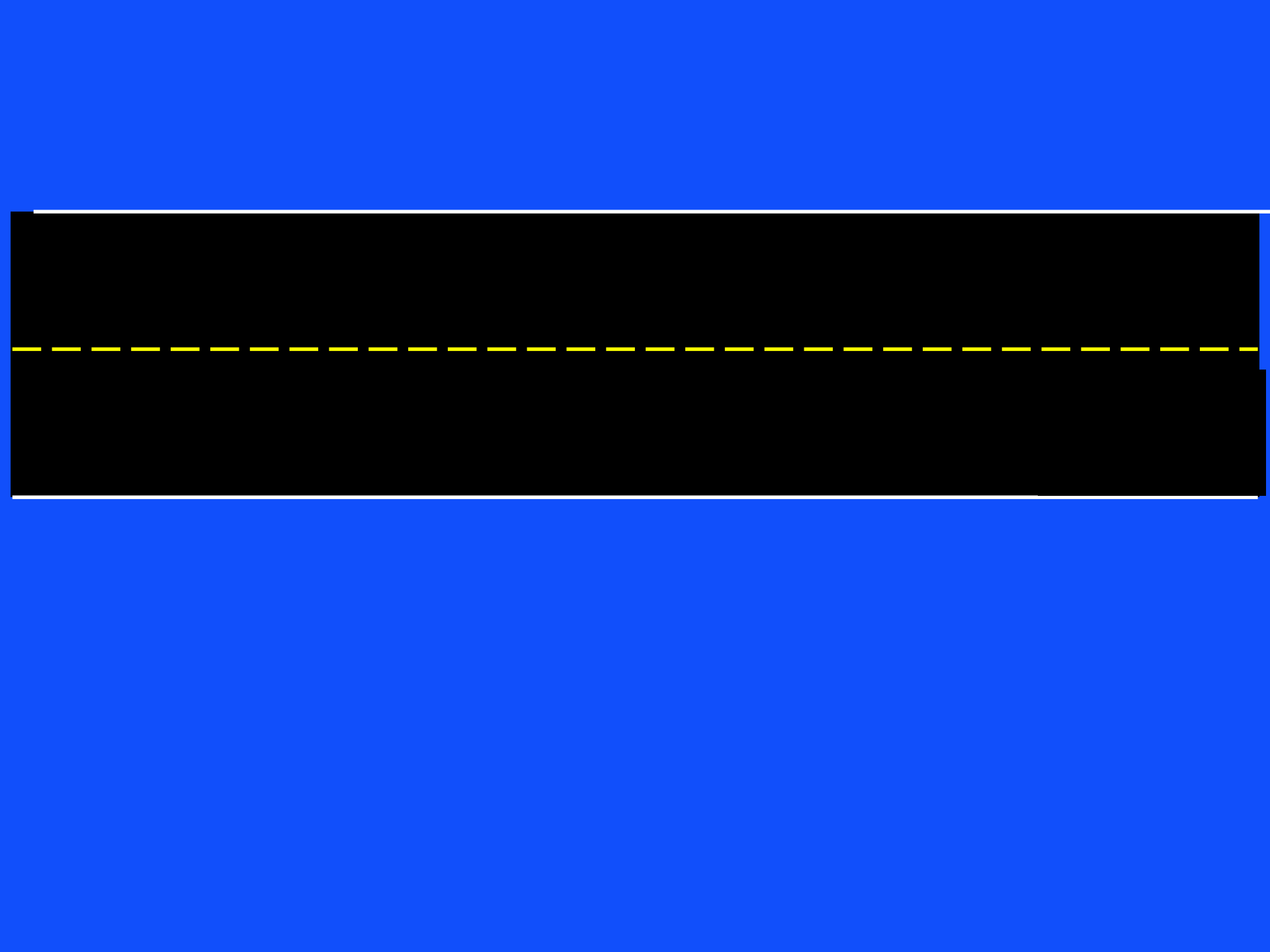












YOU CAN PASS ON THE RIGHT WHEN:

- THE VEHICLE YOU ARE PASSING IS MAKING OR ABOUT TO MAKE A LEFT TURN.
- THE ROAD IS UNOBSTRUCTED AND IS WIDE ENOUGH FOR TWO OR MORE LANES OF VEHICLES IN YOUR DIRECTION.
- YOU CANNOT DRIVE ON THE SHOULDER OF A ROADWAY.
- THIS INCLUDES TO THE RIGHT OF A WHITE FOG LINE.

WHEN BEING PASSED BY ANOTHER VEHICLE

- LET UP ON THE ACCELERATOR
- SLOW DOWN
- LET OTHER VEHICLE PASS QUICKLY