



PARKING TECHNIQUES

PARKING

- DIAGONAL (ANGLE)
- PERPENDICULAR
- PARALLEL
- SPECIAL MANEUVERS
(HILL PARKING)

PARKING MANEUVERS

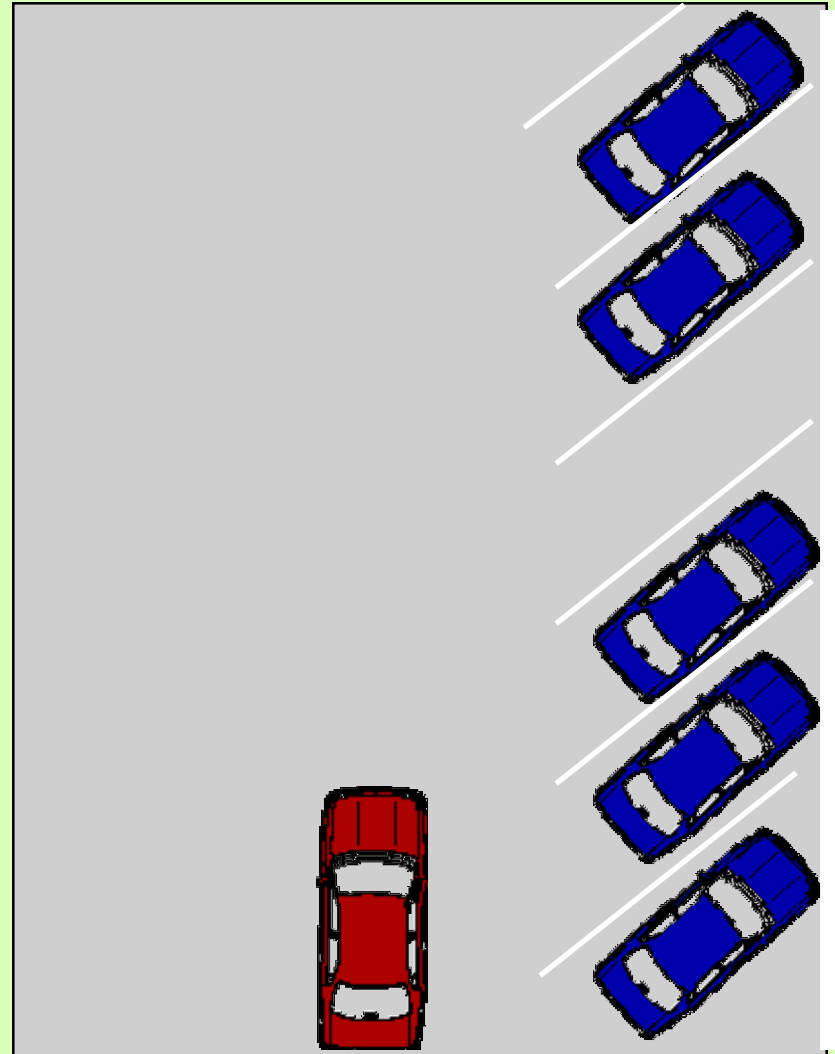
- REQUIRES EXCELLENT CONTROL.
- SLOW SPEED.
- DOES NOT MEAN THERE IS NO RISK.
- COLLISIONS IN PARKING SITUATIONS CAN OCCUR.
- CHECK TRAFFIC CONSTANTLY.

PARKING MANEUVERS

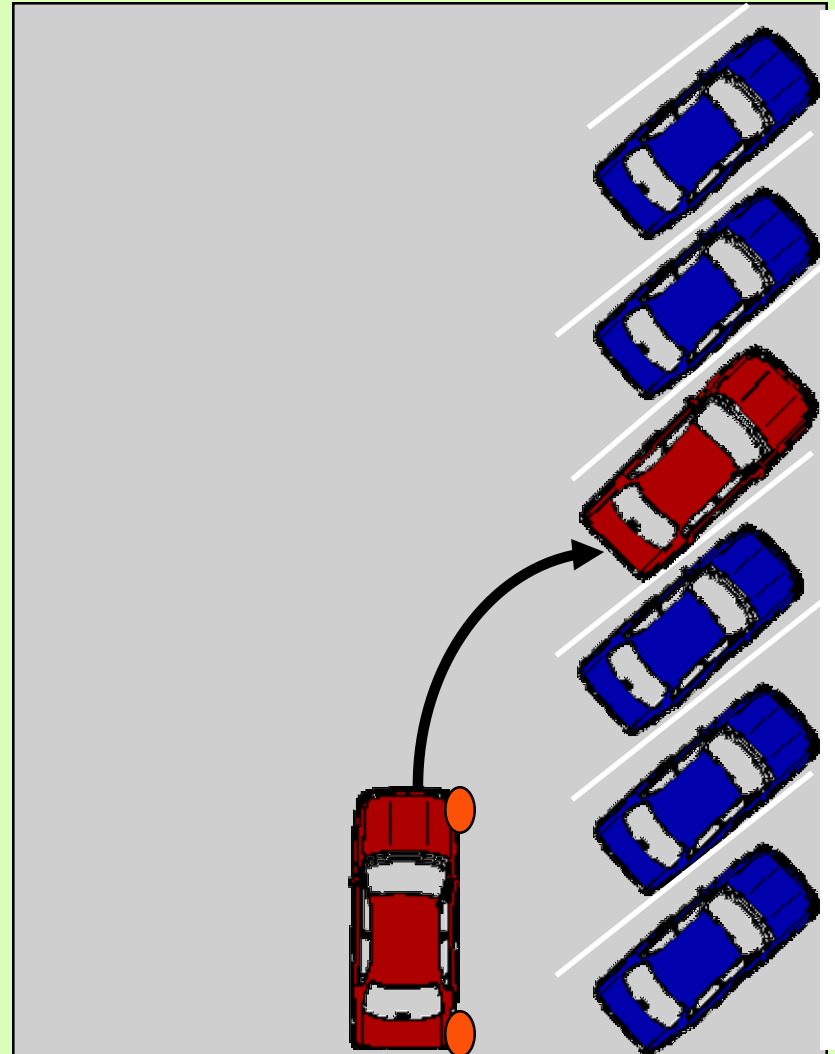
- REMEMBER:
- CHOOSING TO PARK YOUR VEHICLE, WHENEVER POSSIBLE, SO THAT YOU MAY DRIVE INTO AND/ OR OUT OF THE PARKING SPACE, RATHER THAN REVERSING, WILL DIMINISH THE RISK.

DIAGONAL PARKING

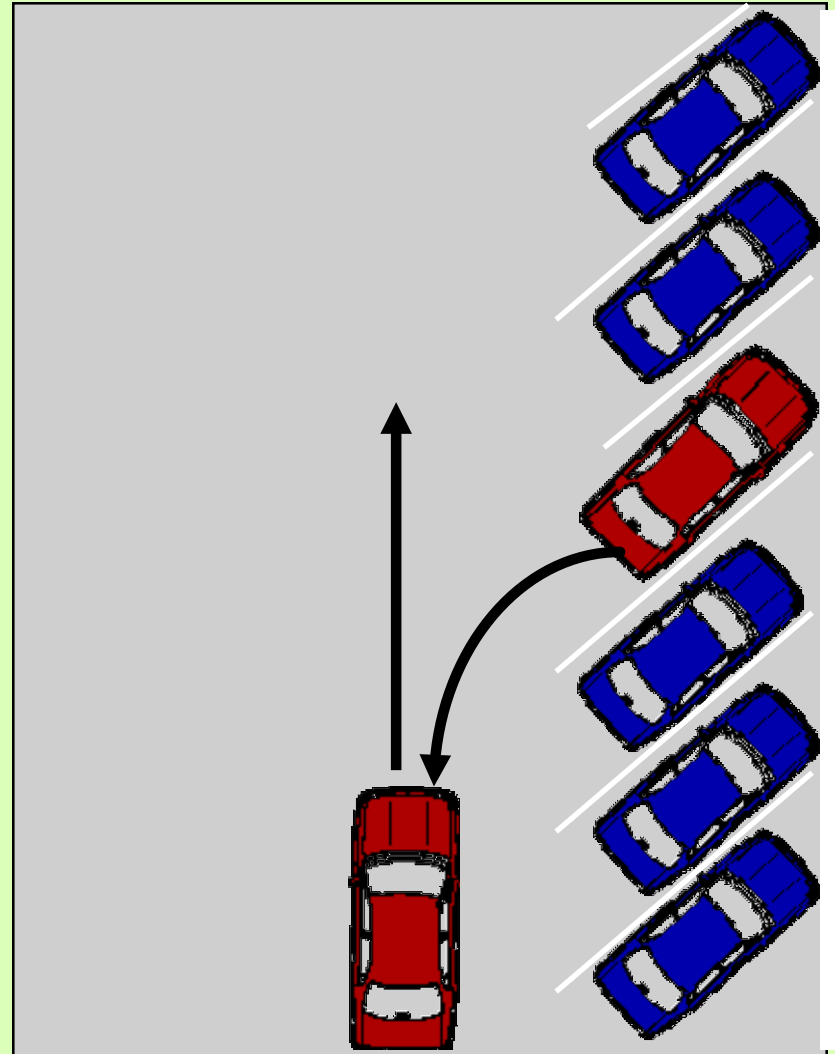
- Locate space on right.
- Check for parking control signs.
- Check oncoming & rear traffic.
- Check position of vehicles on both sides of open space. Watch for HTS movements.



- Target center of space, turn sharply & check clearance on either side.
- Reduce speed, stop when vehicle is straight and in line with other parked vehicles.

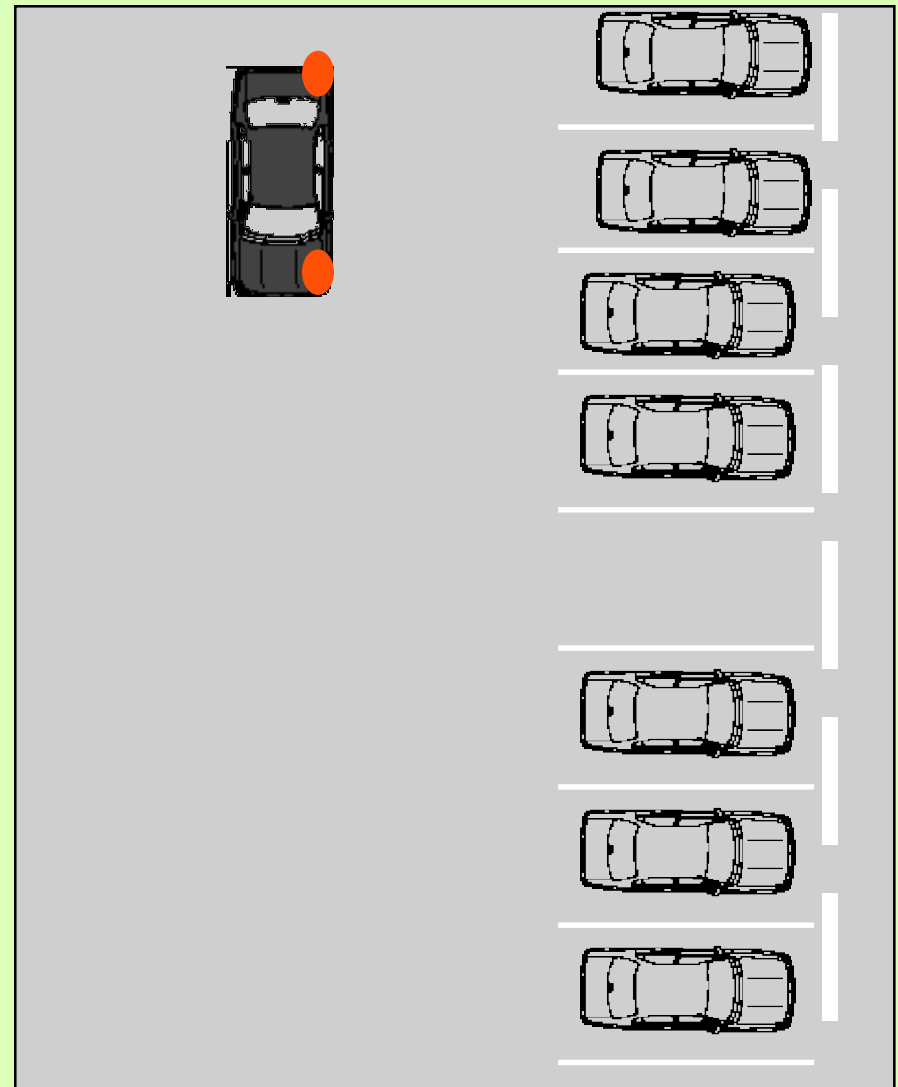


- When leaving space, check traffic, reverse slowly, turn wheel slightly.
- Recheck traffic.
- When front of your vehicle passes the rear of vehicle on your left, look right rear, turn sharply in that direction.

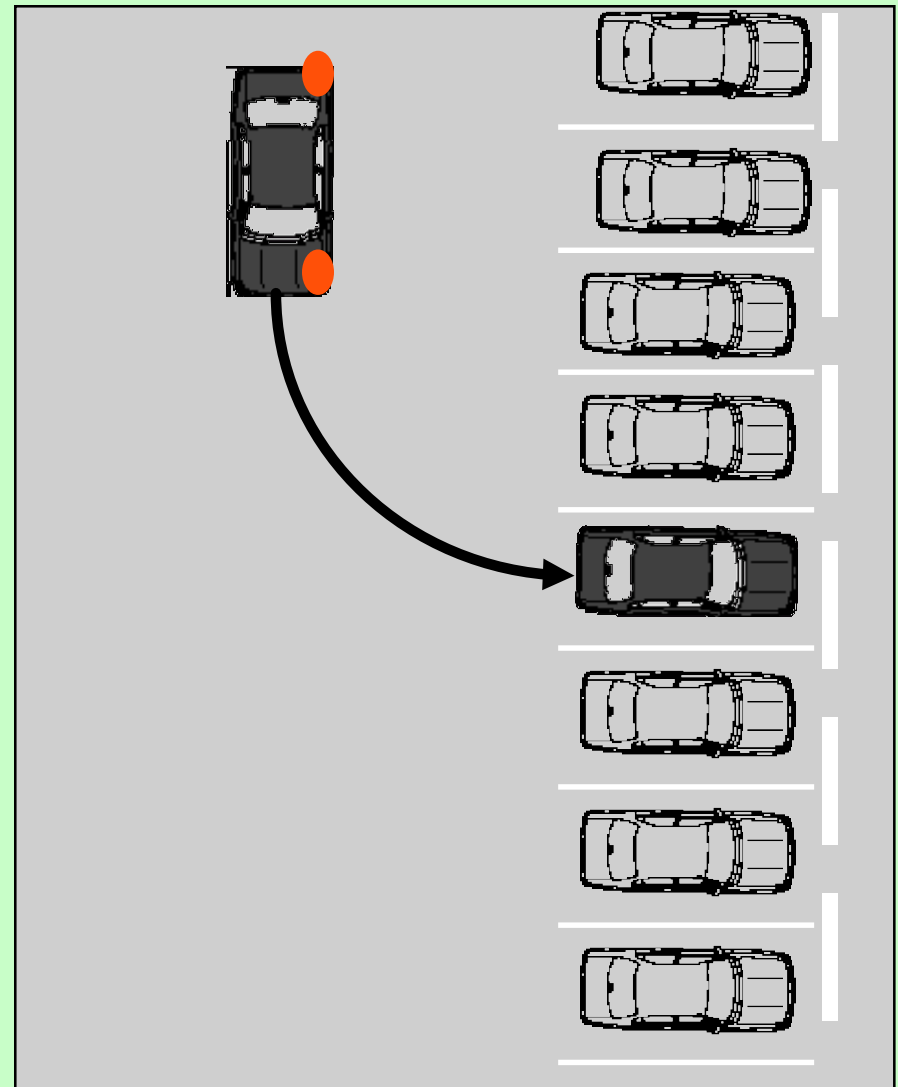


PERPENDICULAR PARKING

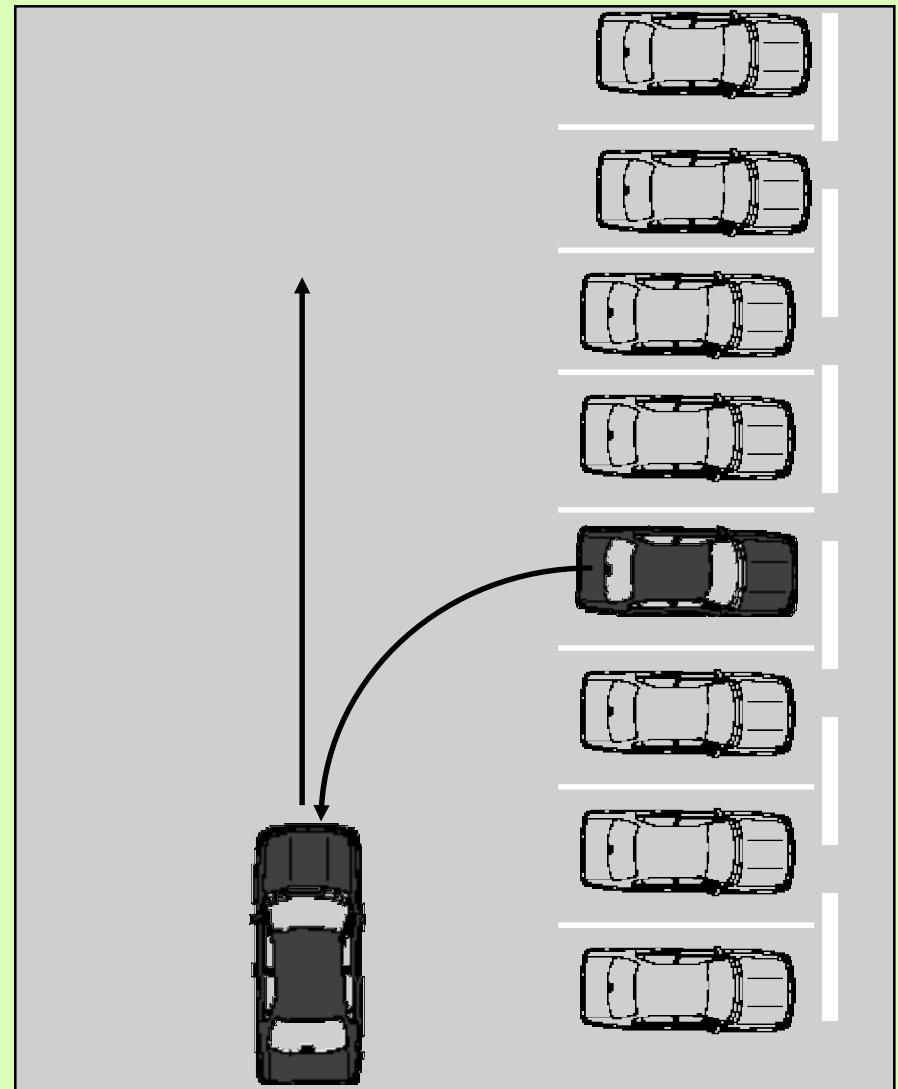
- Choose open space on left, check HTS traffic.
- Check position of vehicles on both sides.
- Signal left, move slightly right to leave space to the left.



- Target center of space.
- Steer sharply left.
- Maintain slow speed.
- Check clearance.
- Countersteer to straighten into center of the space.

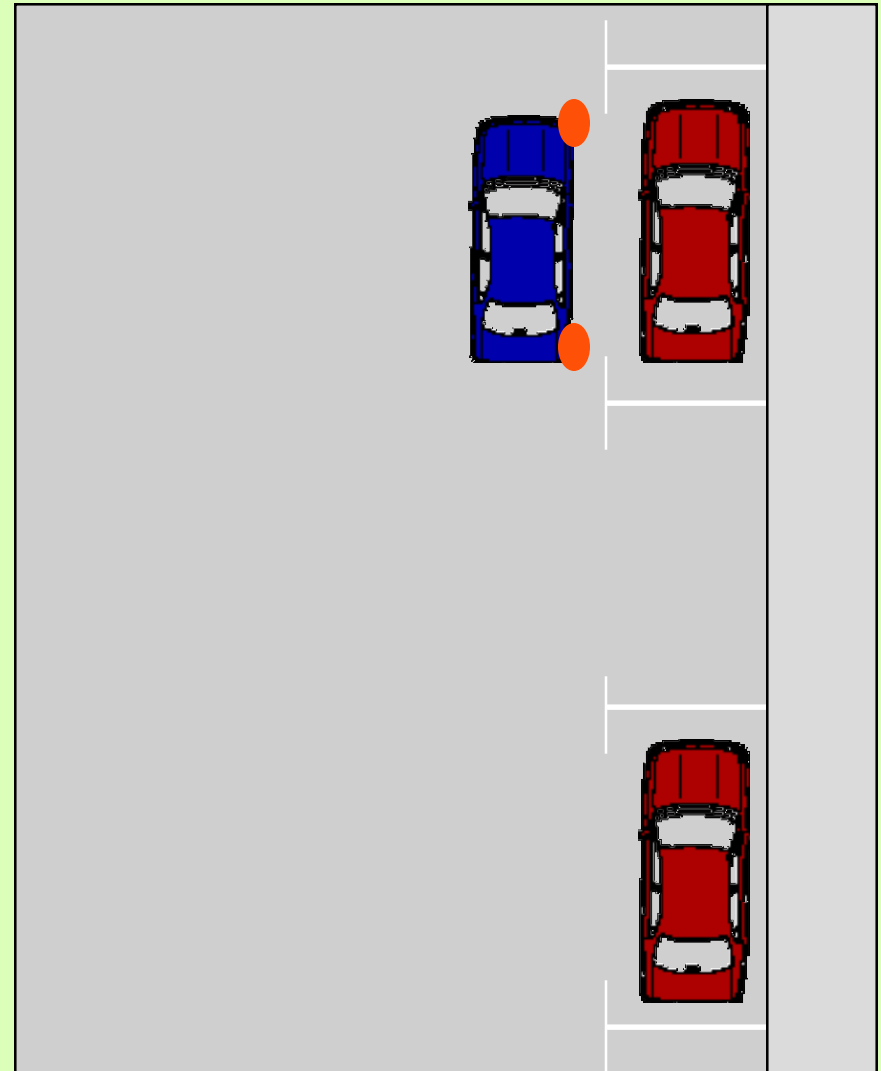


- When leaving space, check traffic.
- Reverse straight, until your vehicle clears vehicles on both sides.
- Turn wheel hard right, change direction, steer straight.

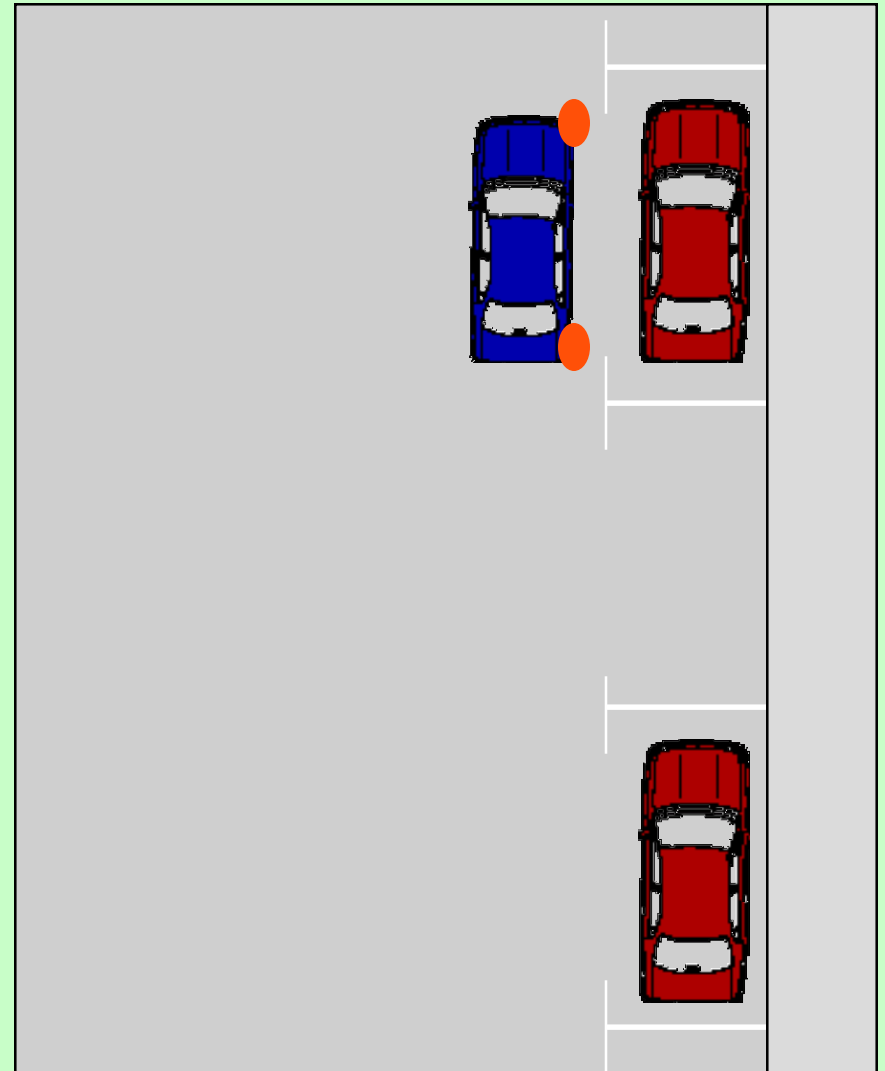


PARALLEL PARKING

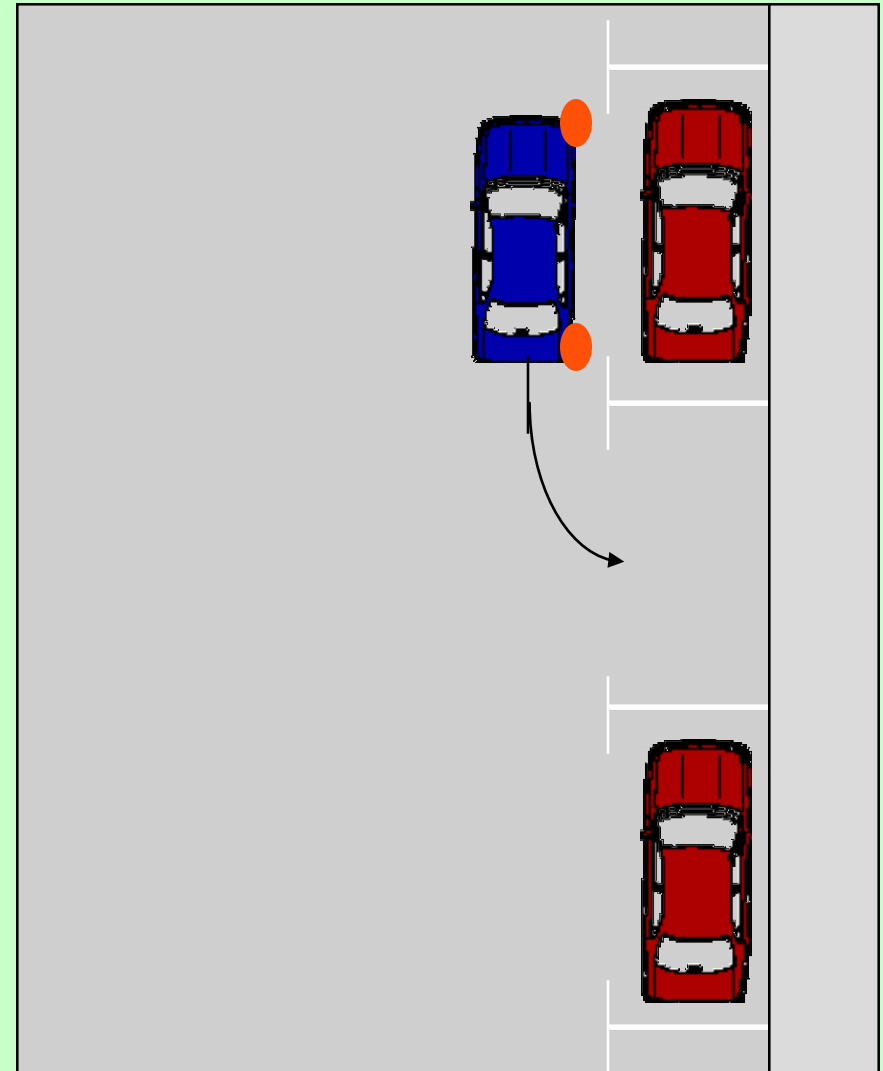
- Tap brake pedal, activate right turn signal, recheck rear traffic.
- Reduce speed, stop beside vehicle.
- Recheck traffic to rear.



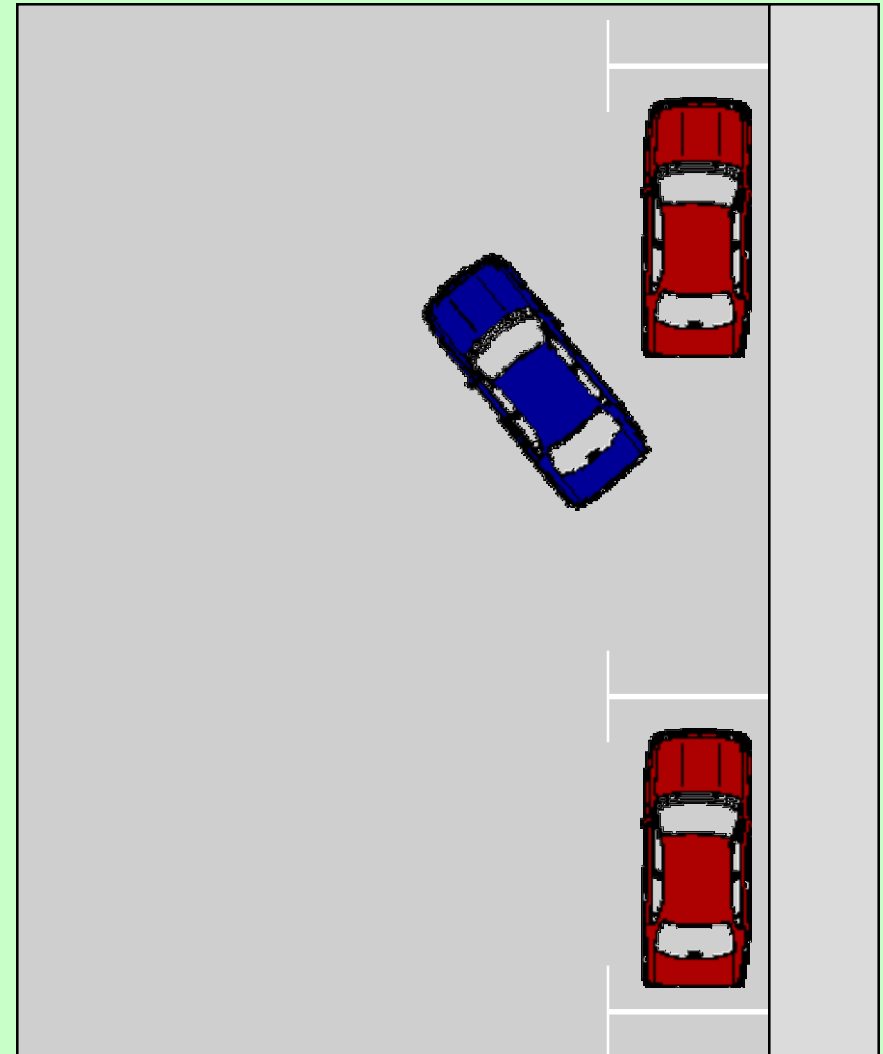
- Line your back bumper to their back bumper.



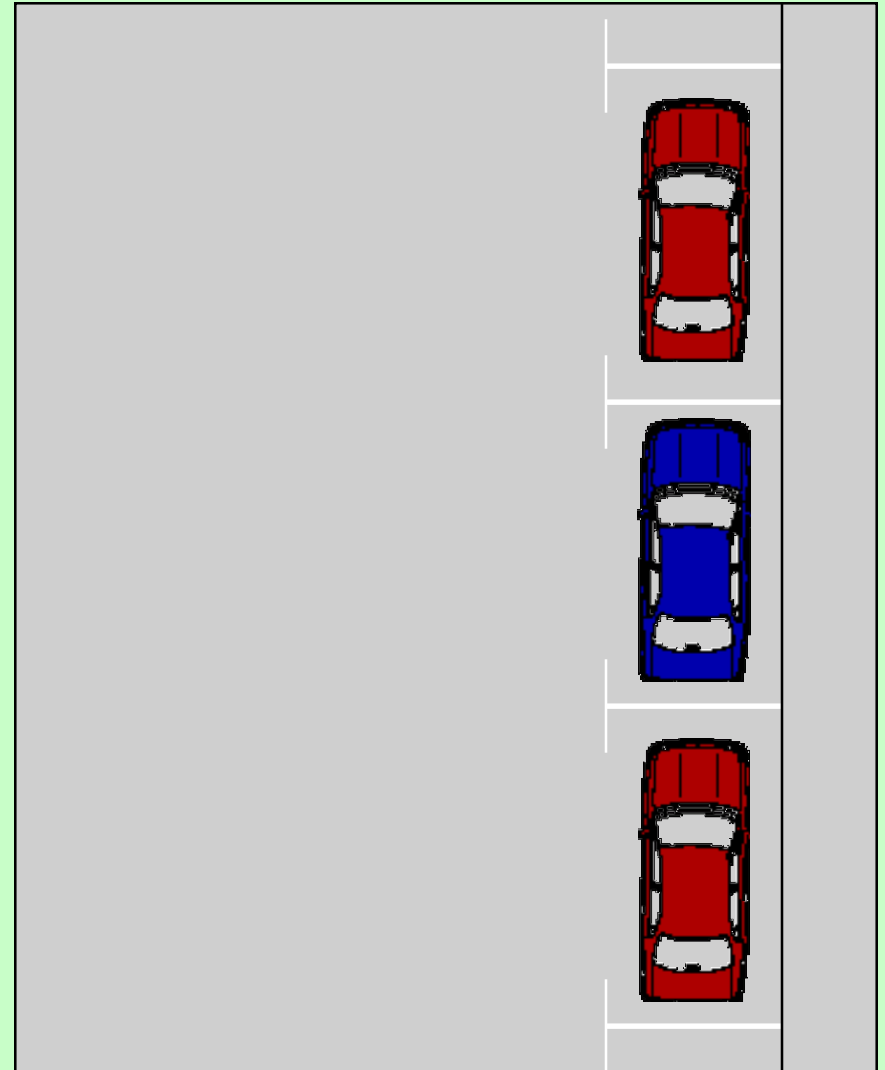
- Find the two reference points (driver's side mirror and passenger side rear wheel).
- Back up to rear wheel.
- Turn wheel hard right (all the way).



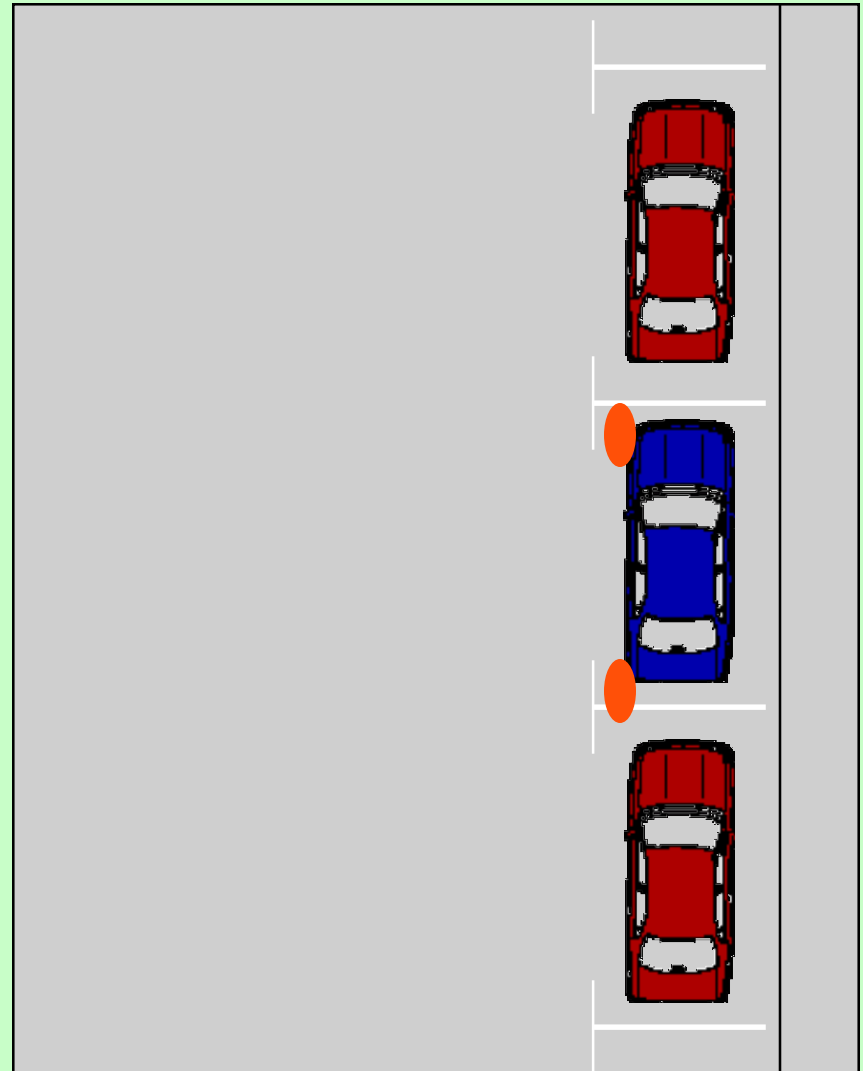
- When car is point to side mirror reference point turn wheel hard to the left (all the way).
- Back up until you are in the parking stall.



- Move forward turning wheel to the right as much as needed.
- Center your vehicle in parking space.
- Your vehicle must be within 12" from the curb.
- Secure your vehicle.



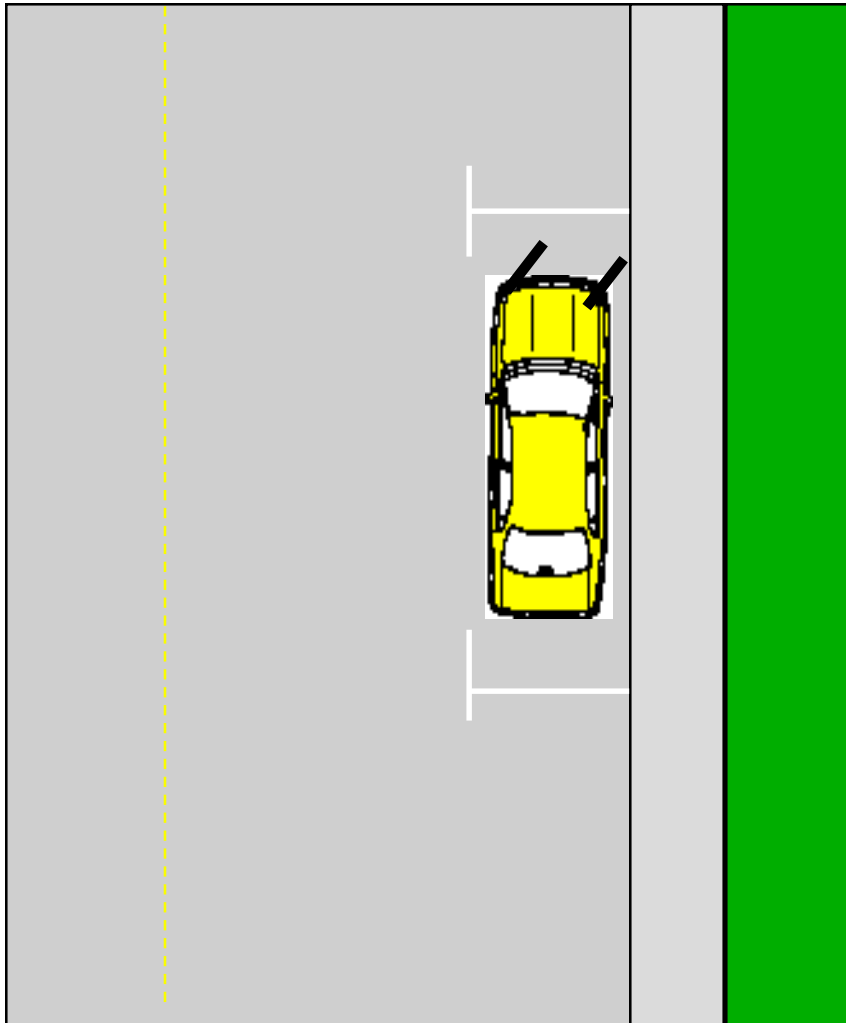
- When leaving space, use mechanical signal.
- Use arm signal for left turn.
- Check traffic, enter traffic and adjust to traffic.



SPECIAL TECHNIQUES HILL PARKING

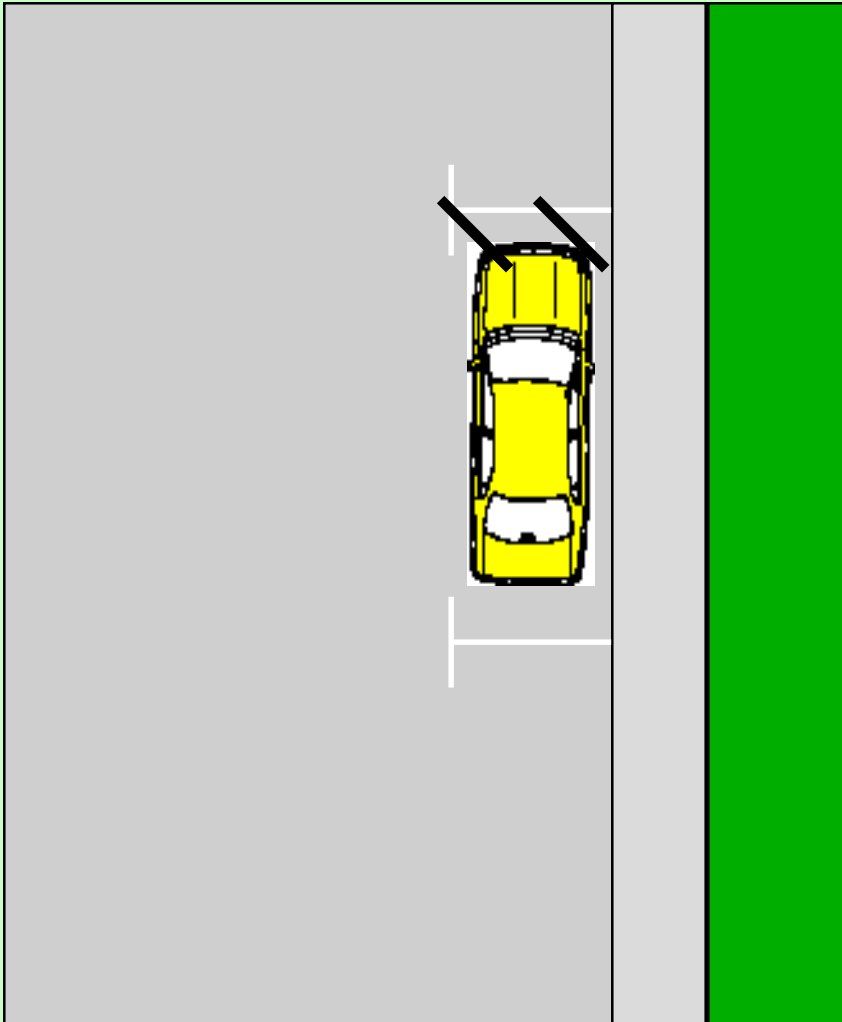
- PARKING ON A HILL REQUIRES THAT YOUR FRONT TIRES BE TURNED IN SUCH A MANNER AS TO CAUSE YOUR VEHICLE TO ROLL OUT OF TRAFFIC OR AGAINST THE CURB SHOULD IT BEGIN TO MOVE.

DOWNHILL WITH CURB



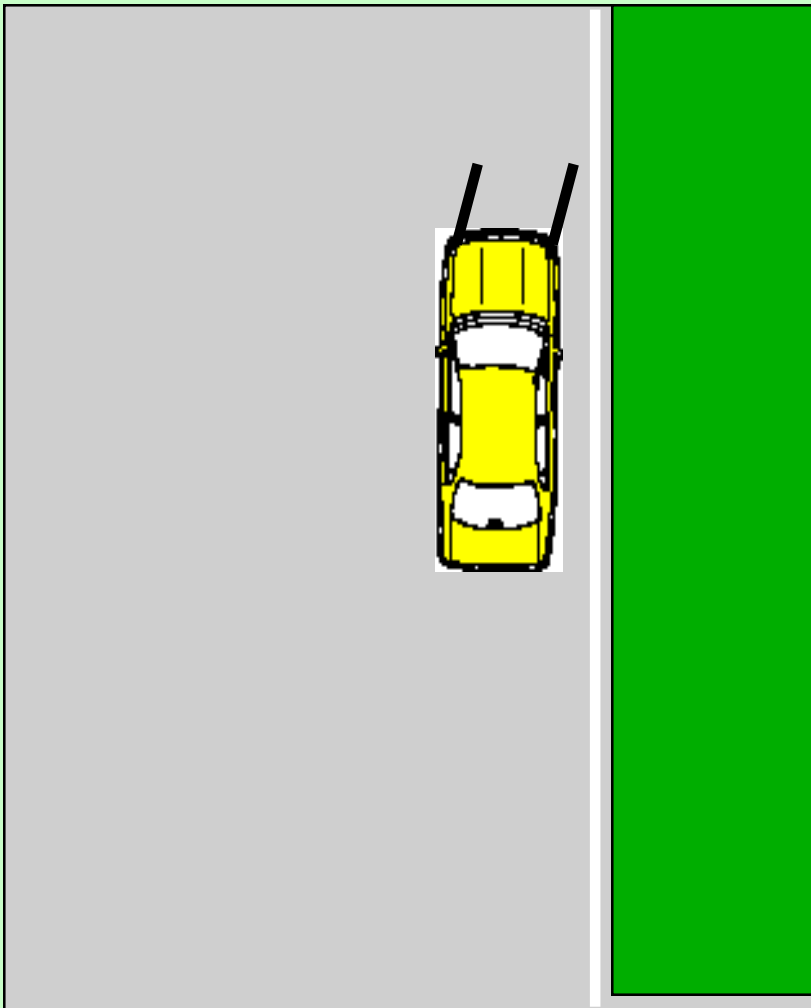
- Tires should be turned to the right.
- Gently move vehicle forward to lock front of tires against the curb.
- Secure vehicle.
- When leaving, be sure to reverse and straighten tires.
- Check mirrors, signal, head check, and enter when clear.

UPHILL WITH CURB



- Get about 3 inches from the curb.
- Tires should be turned away from the curb (left).
- When leaving parking space, check mirrors, signal, head check and enter traffic when clear.

UP/ DOWNHILL WITHOUT CURB



- The tires should be turned toward the curb.
- This prevents your vehicle from rolling into traffic.
- When pulling away, check mirrors, signal, head check and turn wheel slightly left when slightly accelerating.



PARKING TECHNIQUES