

S  
TRAFFIC  
F  
EDUCATION  
T  
Y

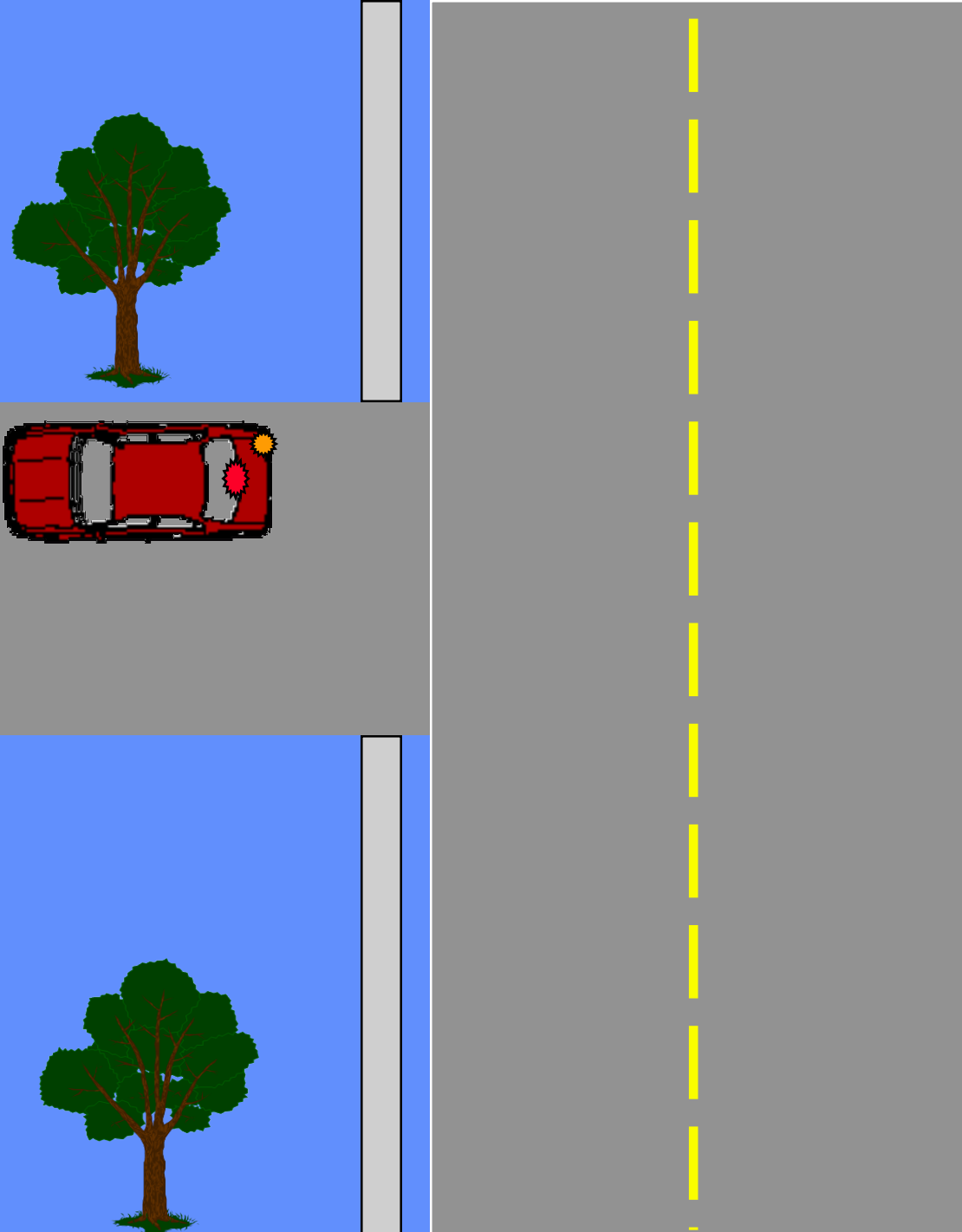
present s

# BACKING AROUND A CORNER

- The purpose of backing around a corner is to demonstrate your ability to safely and legally back out of a driveway.

# REMEMBER

- You must yield to pedestrians at the crosswalk.
- You must yield to all traffic at the street.
- Steer the way you want the back of the car to move.

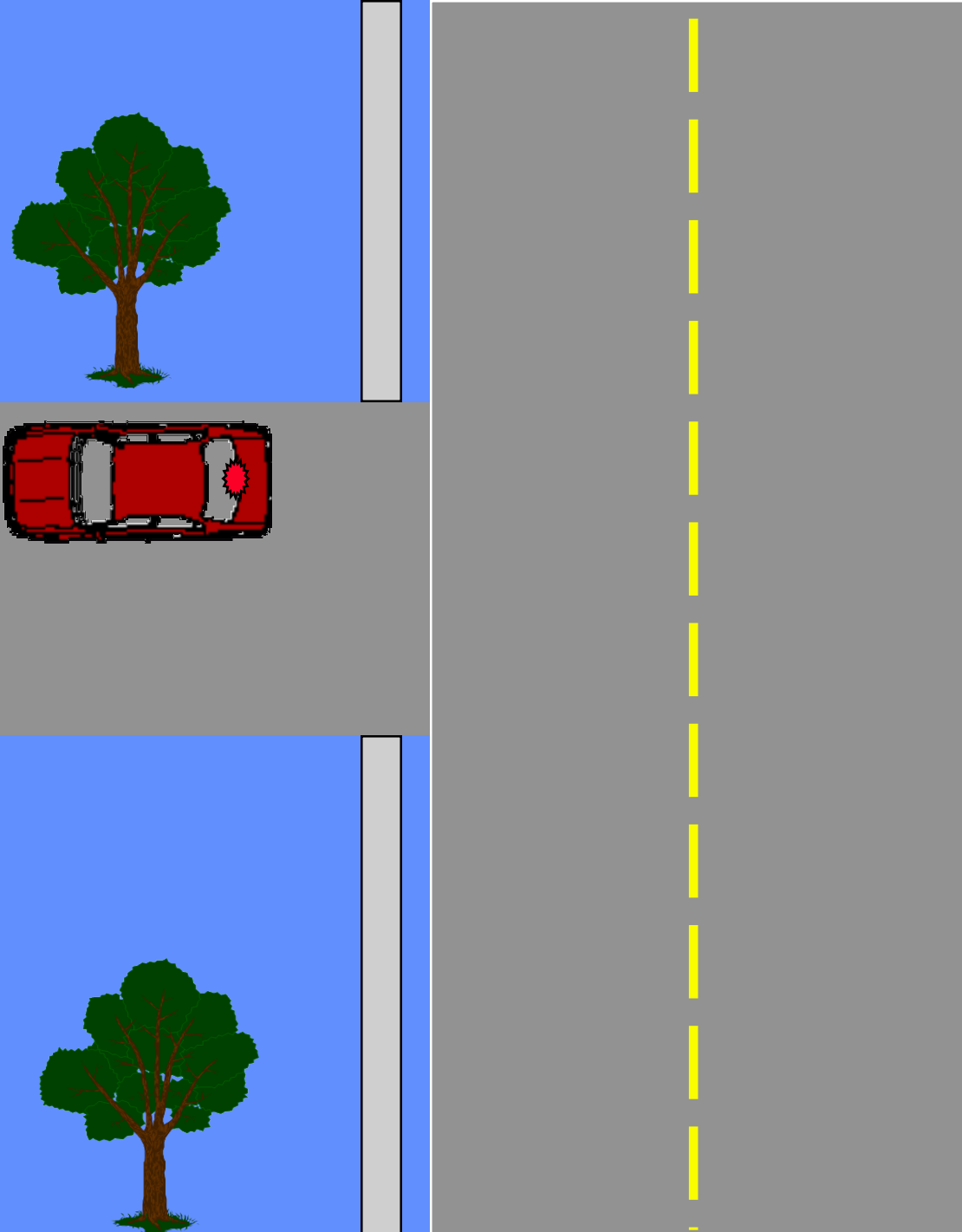


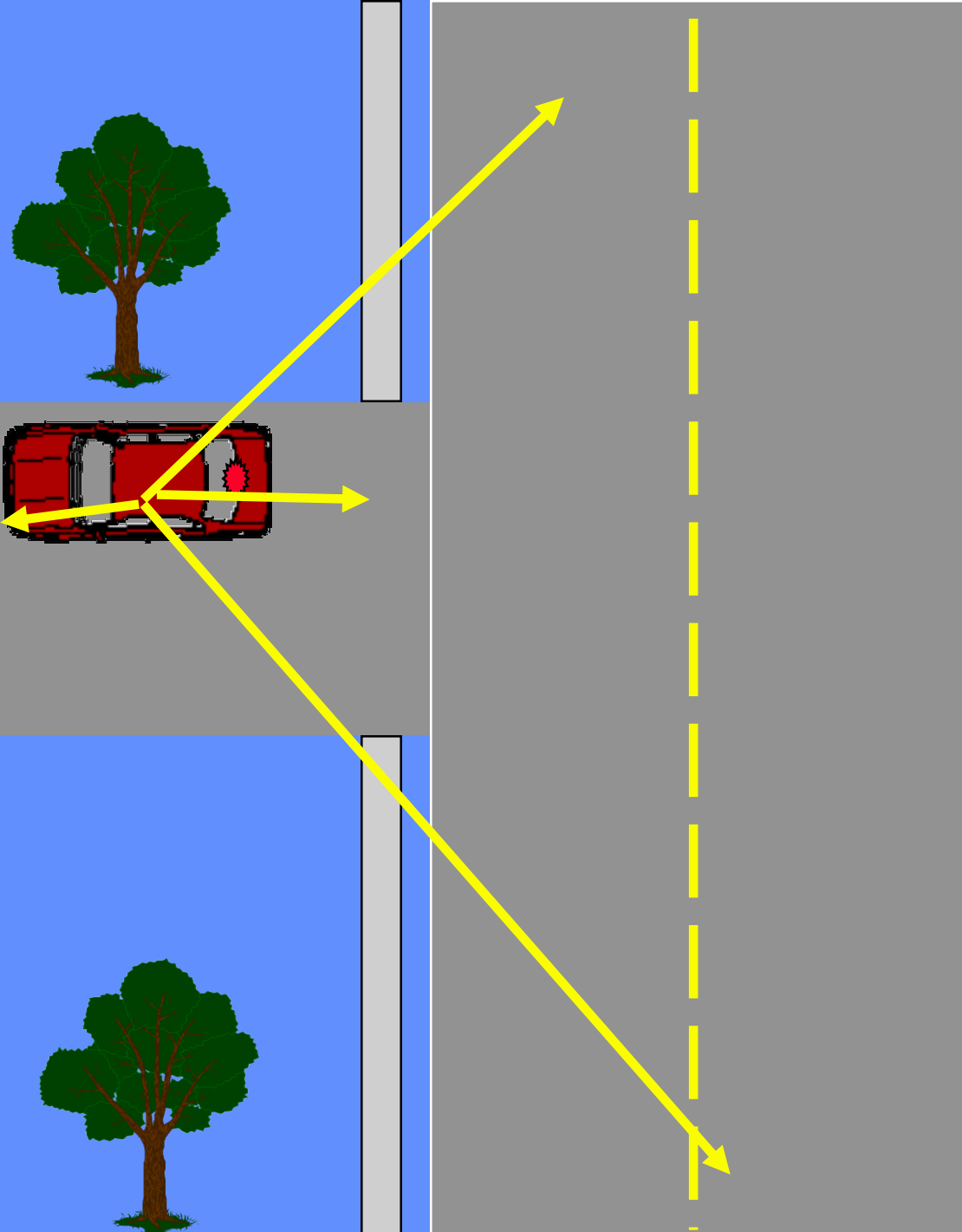
# Approach curb

- Check rearview mirrors.
- Activate right turn signal.
- Check right blindspot.
- Pull to about 1 foot from the curb or edge of road.
- Stop parallel.

# Gear Position

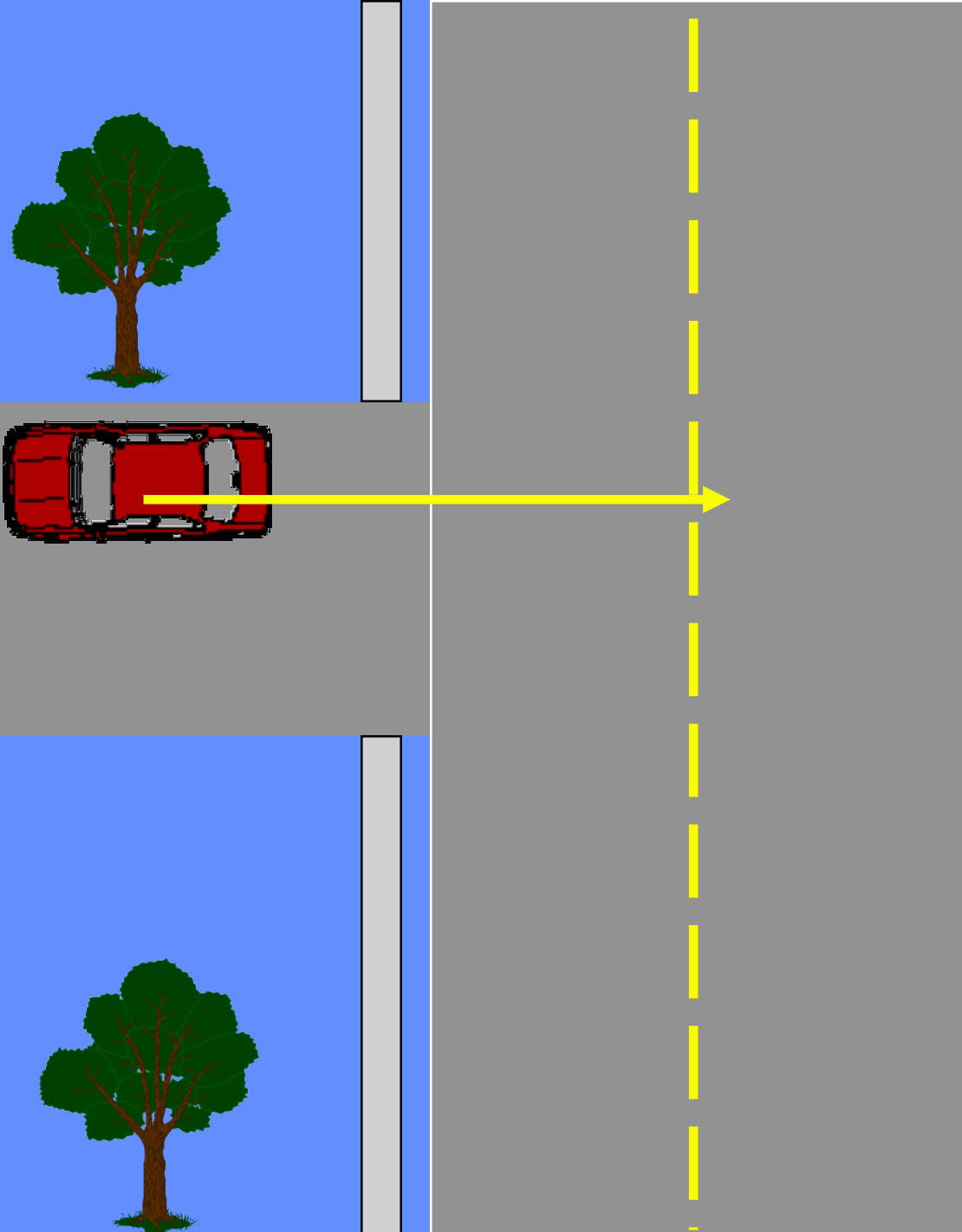
- Keep your foot firmly on the brake.
- Shift to reverse.





# Evaluate

- Scan all directions.
- Any pedestrians?
- Any traffic?



## Target

- Look over your right shoulder out the rear window.
- Target the center of the parking or curb lane.

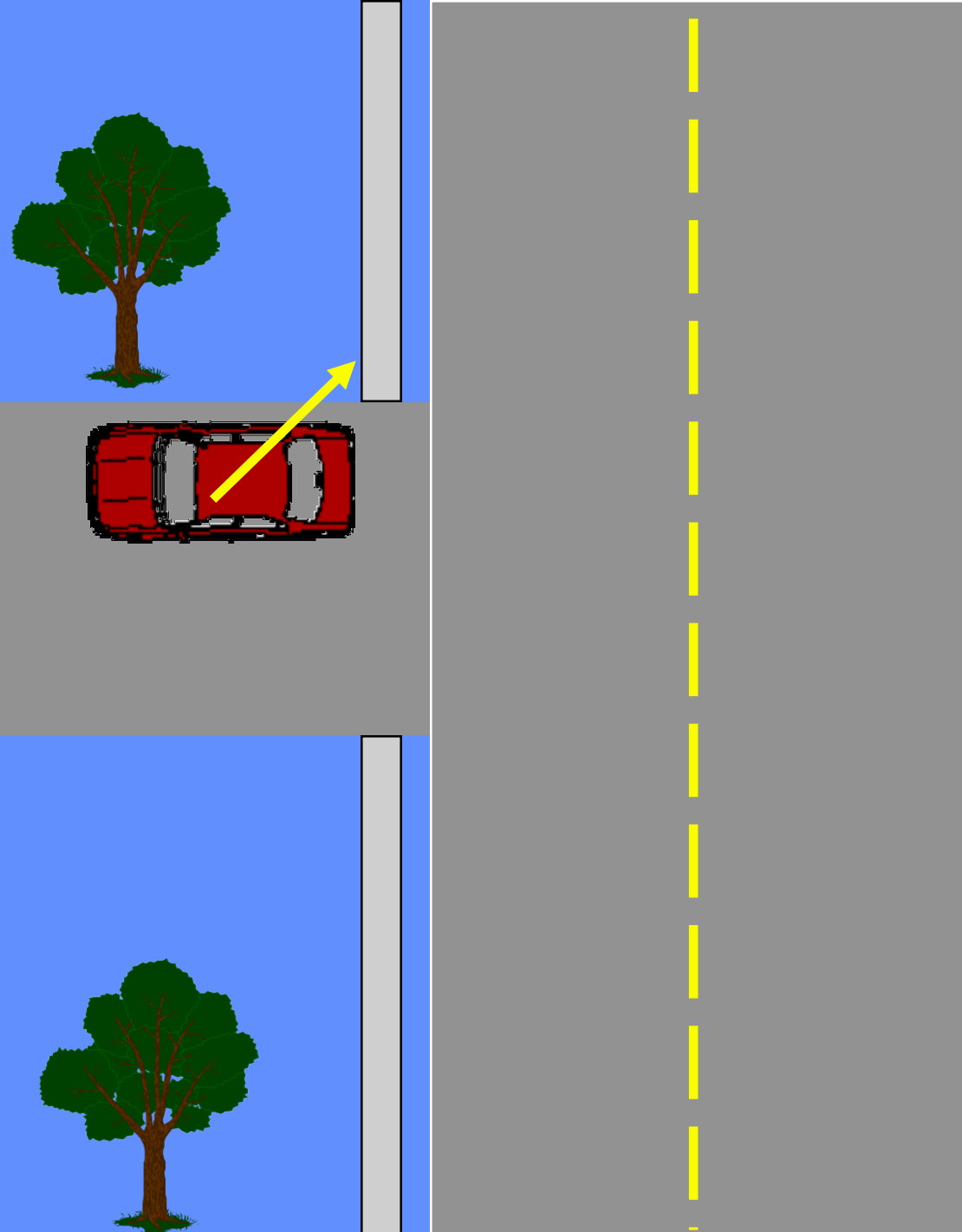
## Foot Brake

- Control your speed primarily with the brake to slowly back toward target.



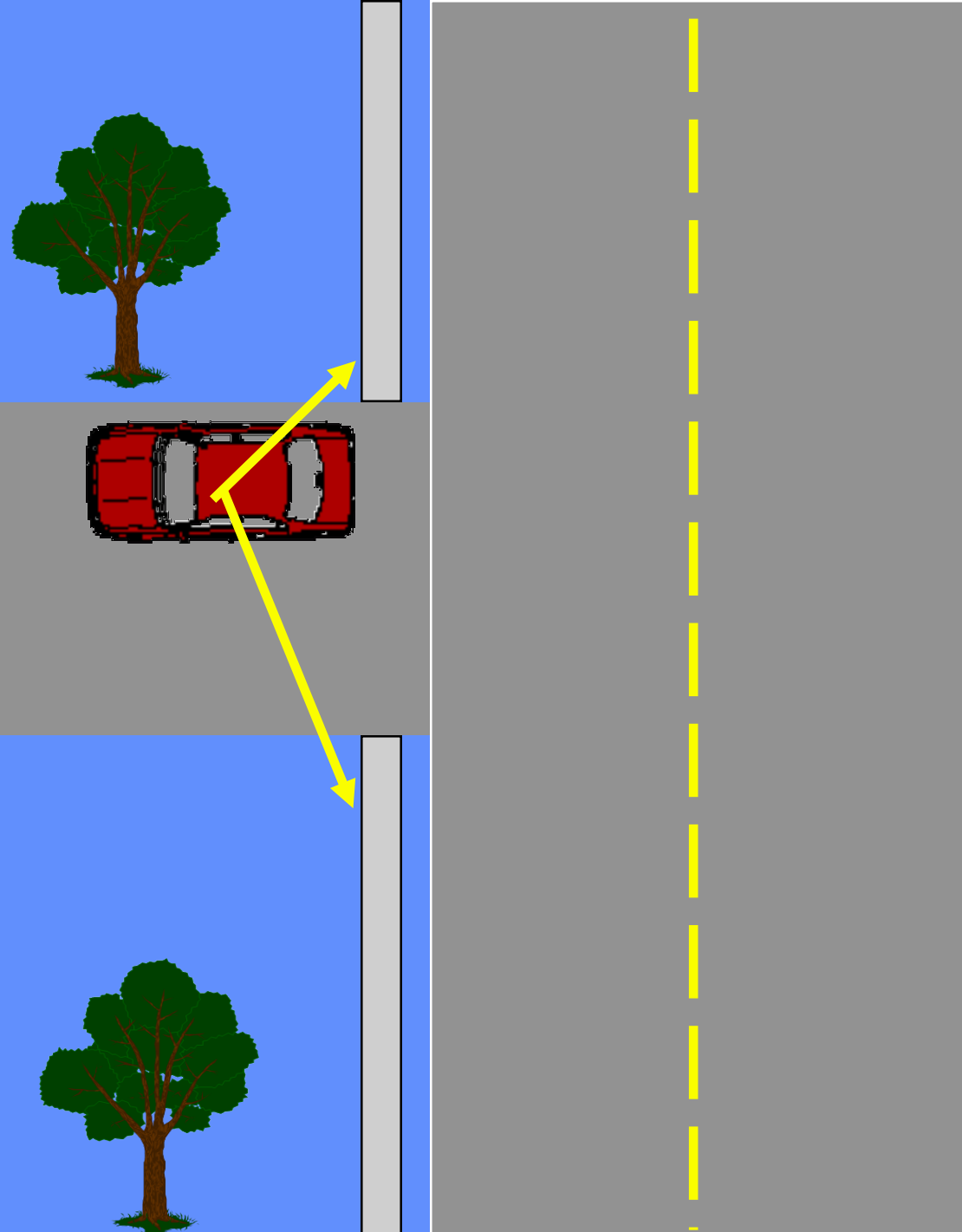
# Back to Crosswalk

- Full stop prior to reaching the crosswalk.
- Reference point is edge of sidewalk visible out the right rear side window



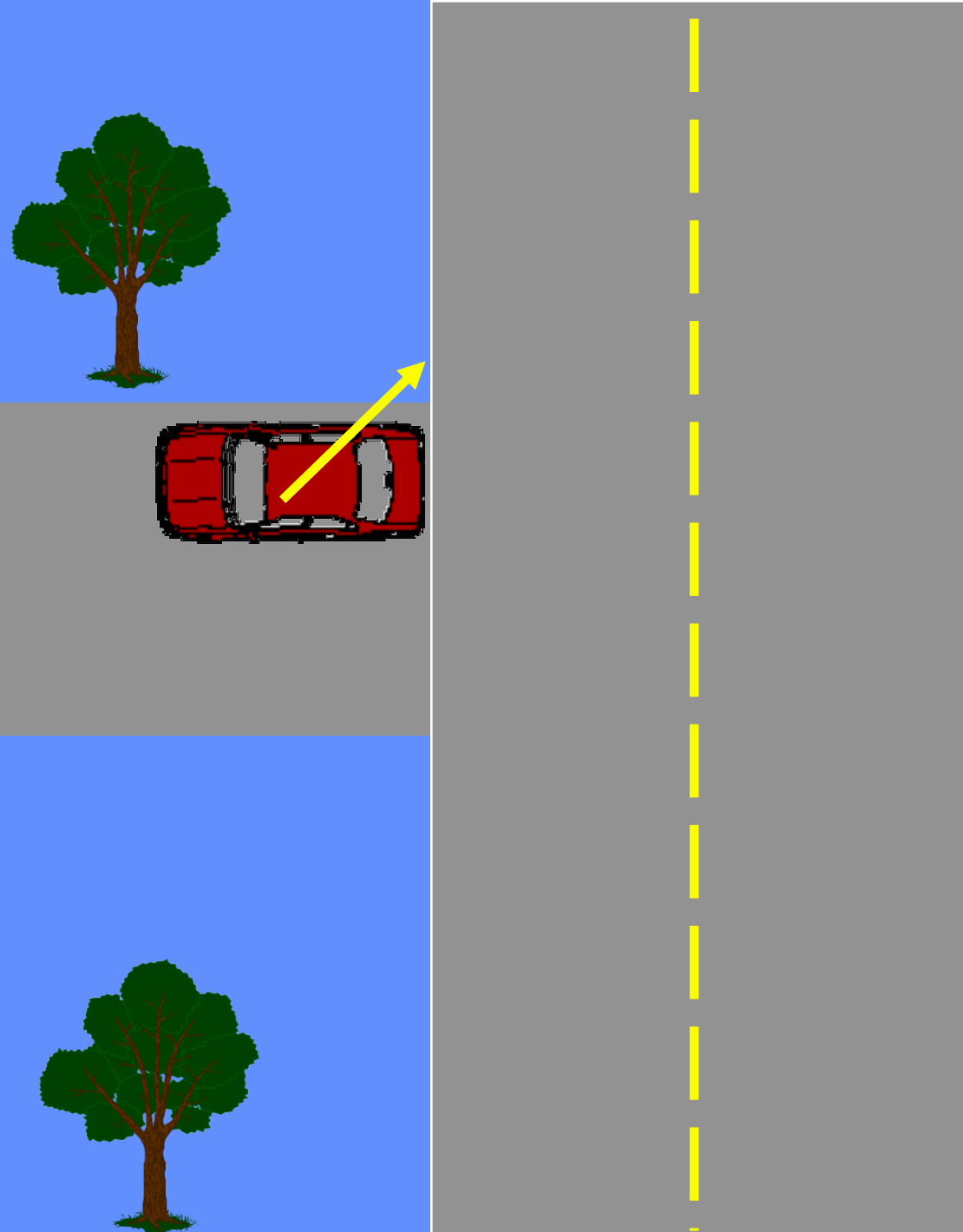
# Back to Crosswalk

- Check for pedestrians from both the left and right.
- Yield to all pedestrians!



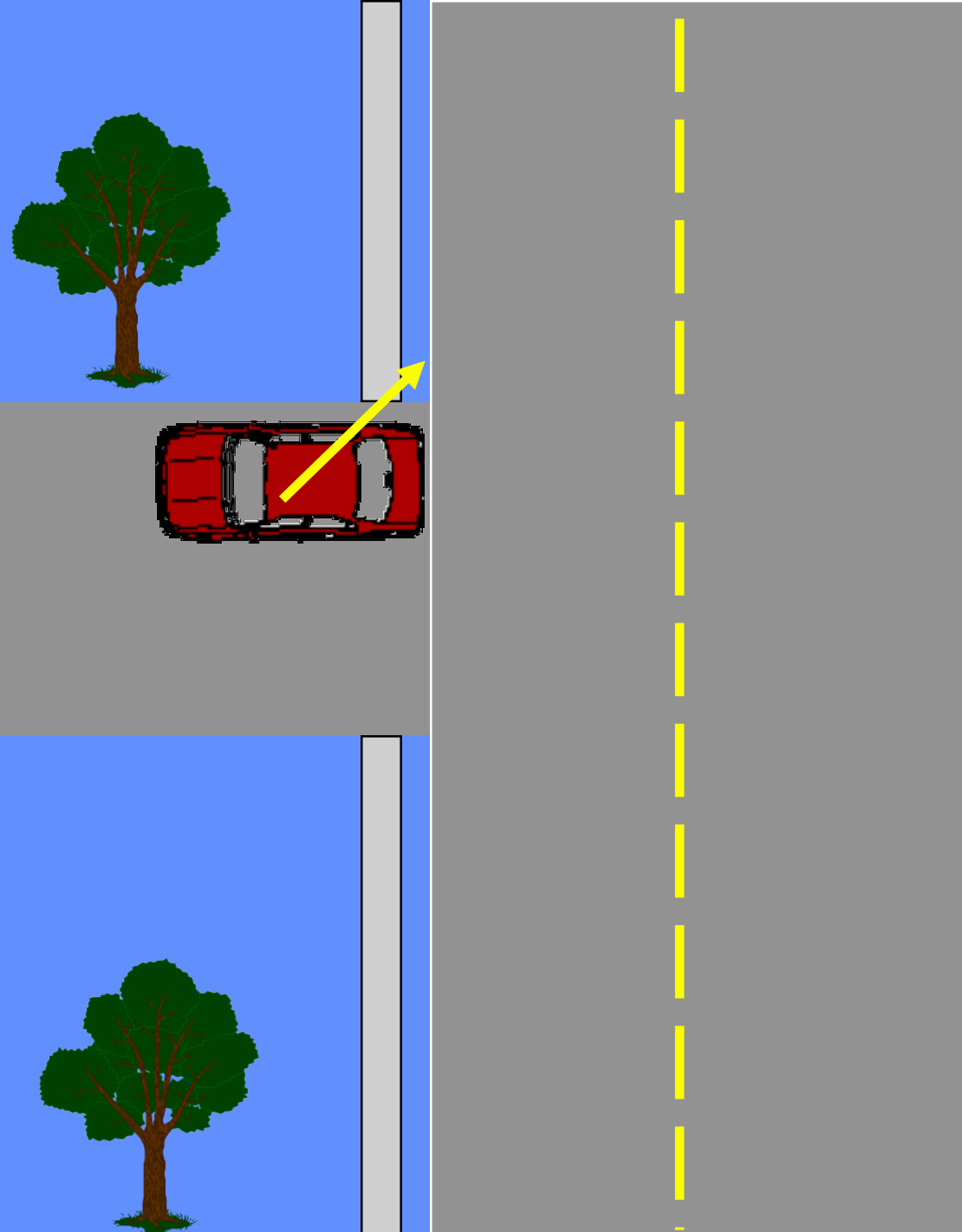
# Back to Crosswalk

- If no sidewalk area the crosswalk is at the edge of the road.
- Full Stop and check left and right for pedestrians.
- Yield to all pedestrians.



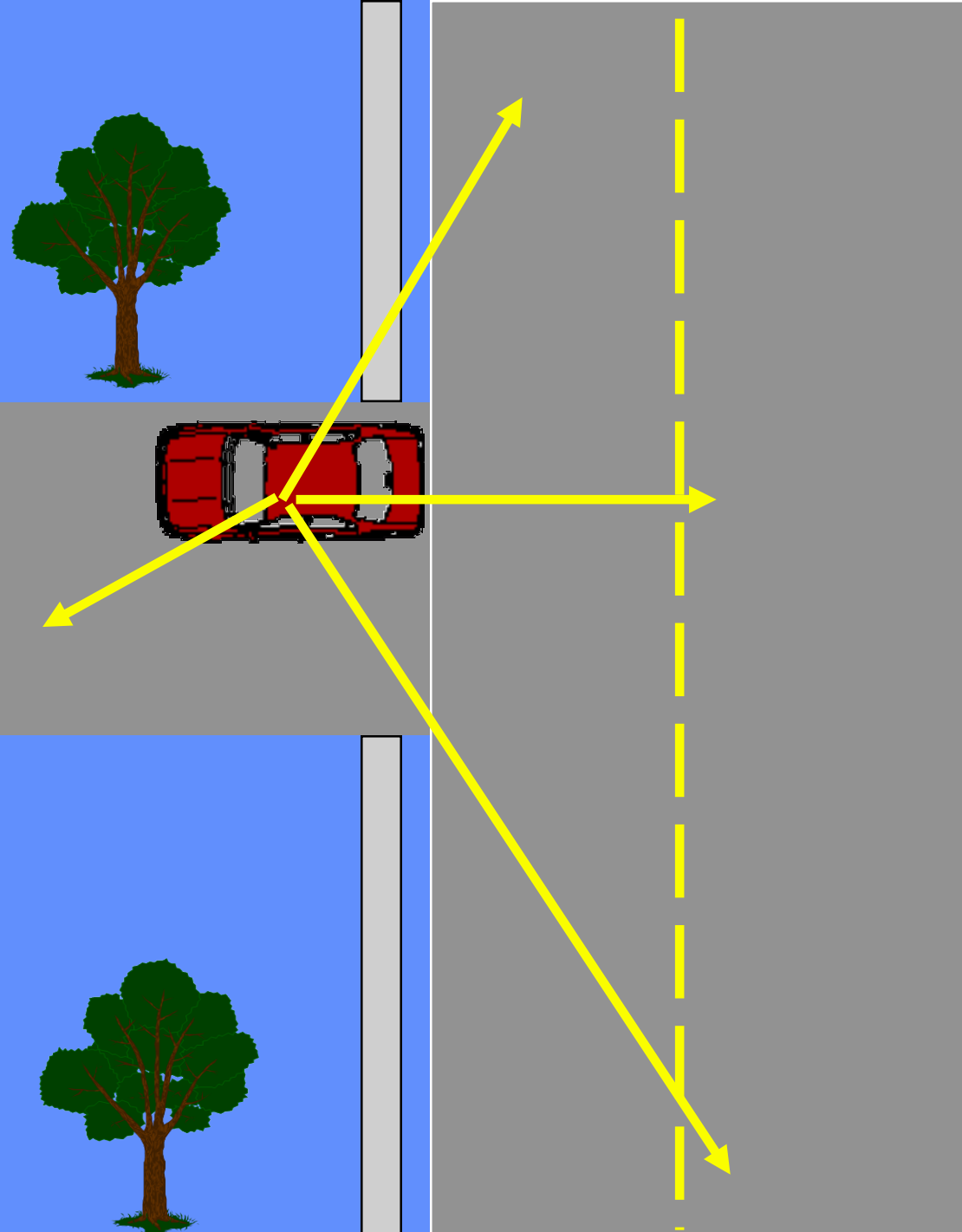
# Back to Intersection

- Full stop.
- Reference point is edge of road or curb visible out the right rear side window



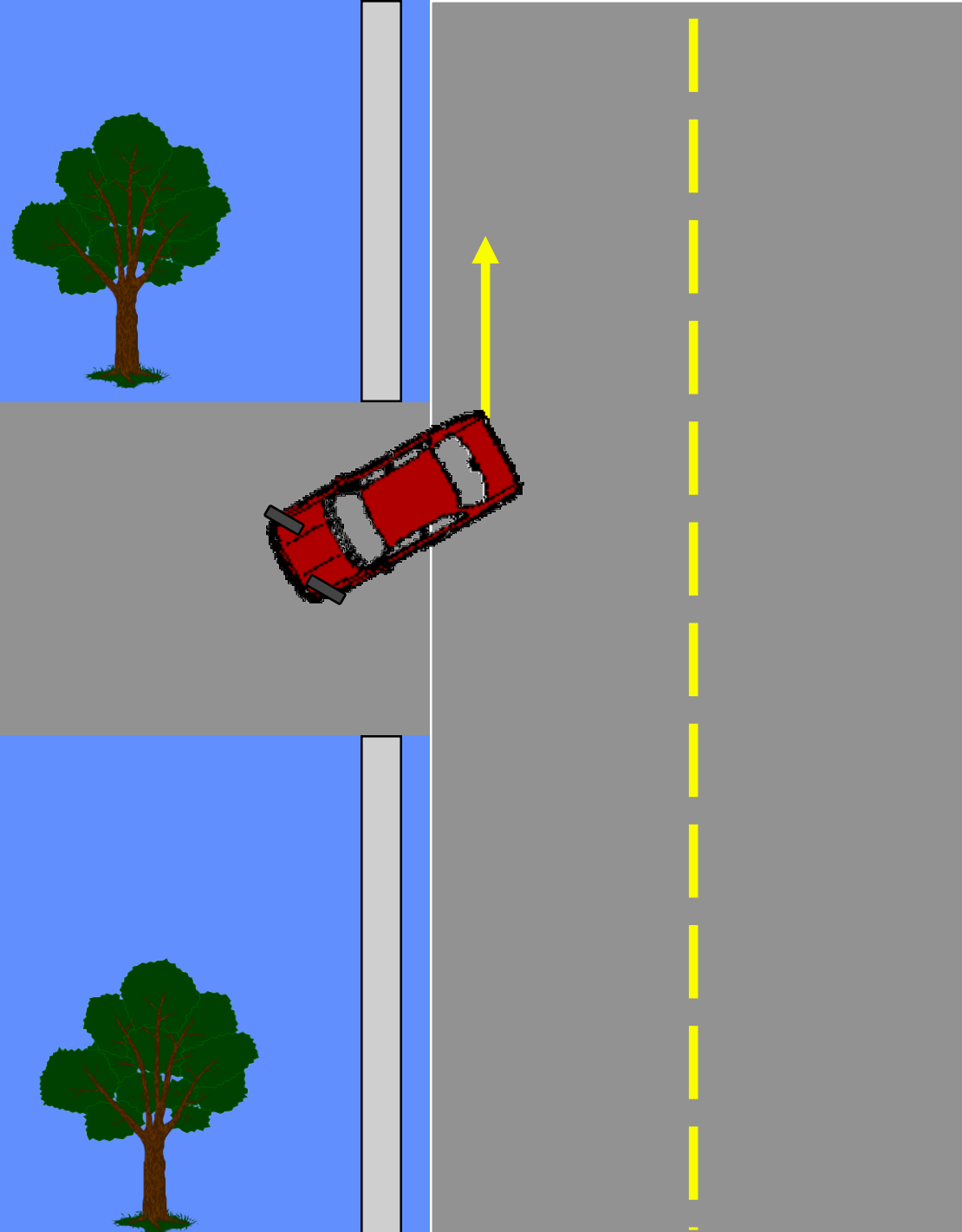
# Back to Intersection

- Check for traffic from all directions.
- Check for vehicles backing out of other driveways.
- Check left front for clearance.
- Yield to all vehicles!



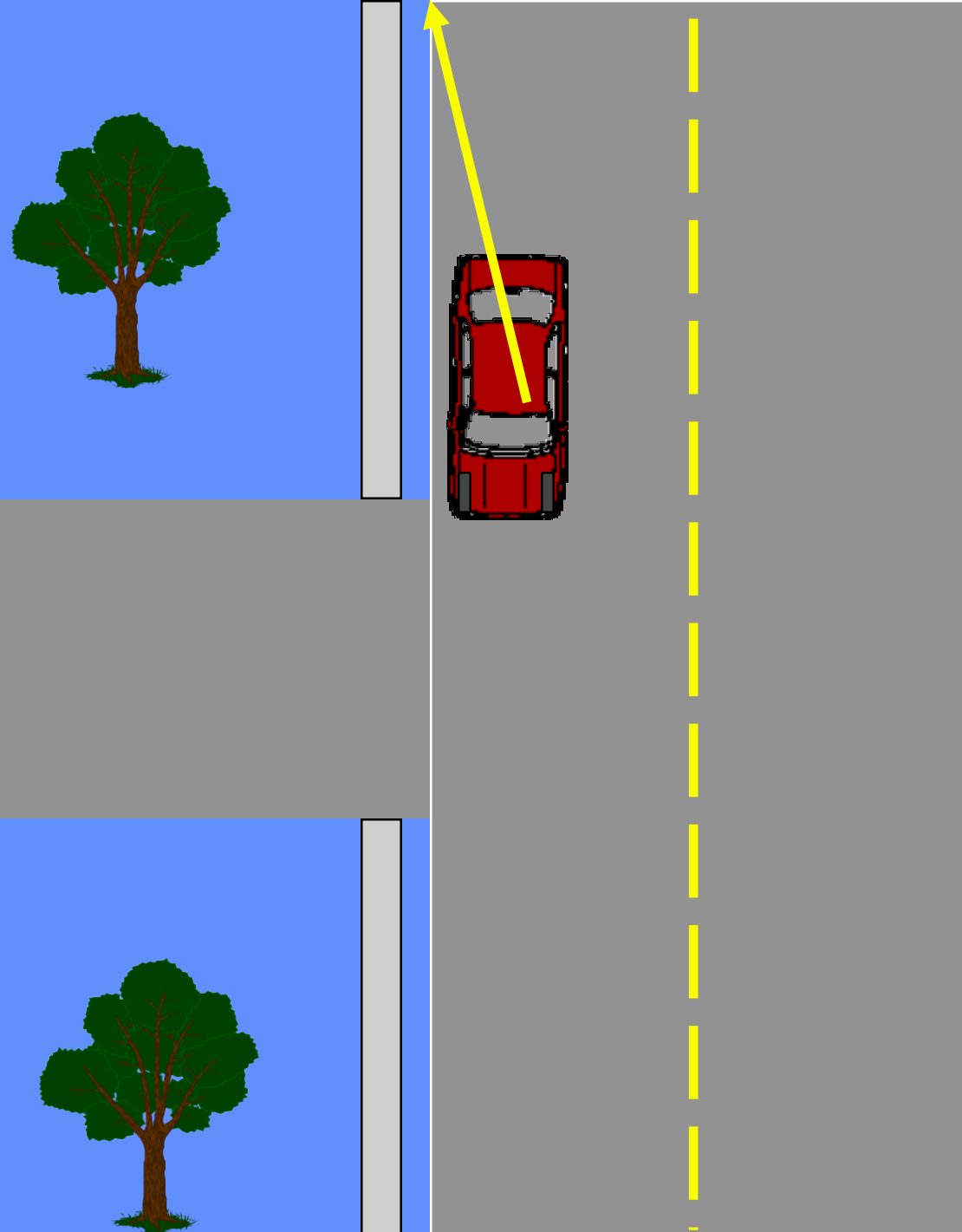
# Back to the Right

- Let off the brake.
- As the car begins to move immediately turn hard right.



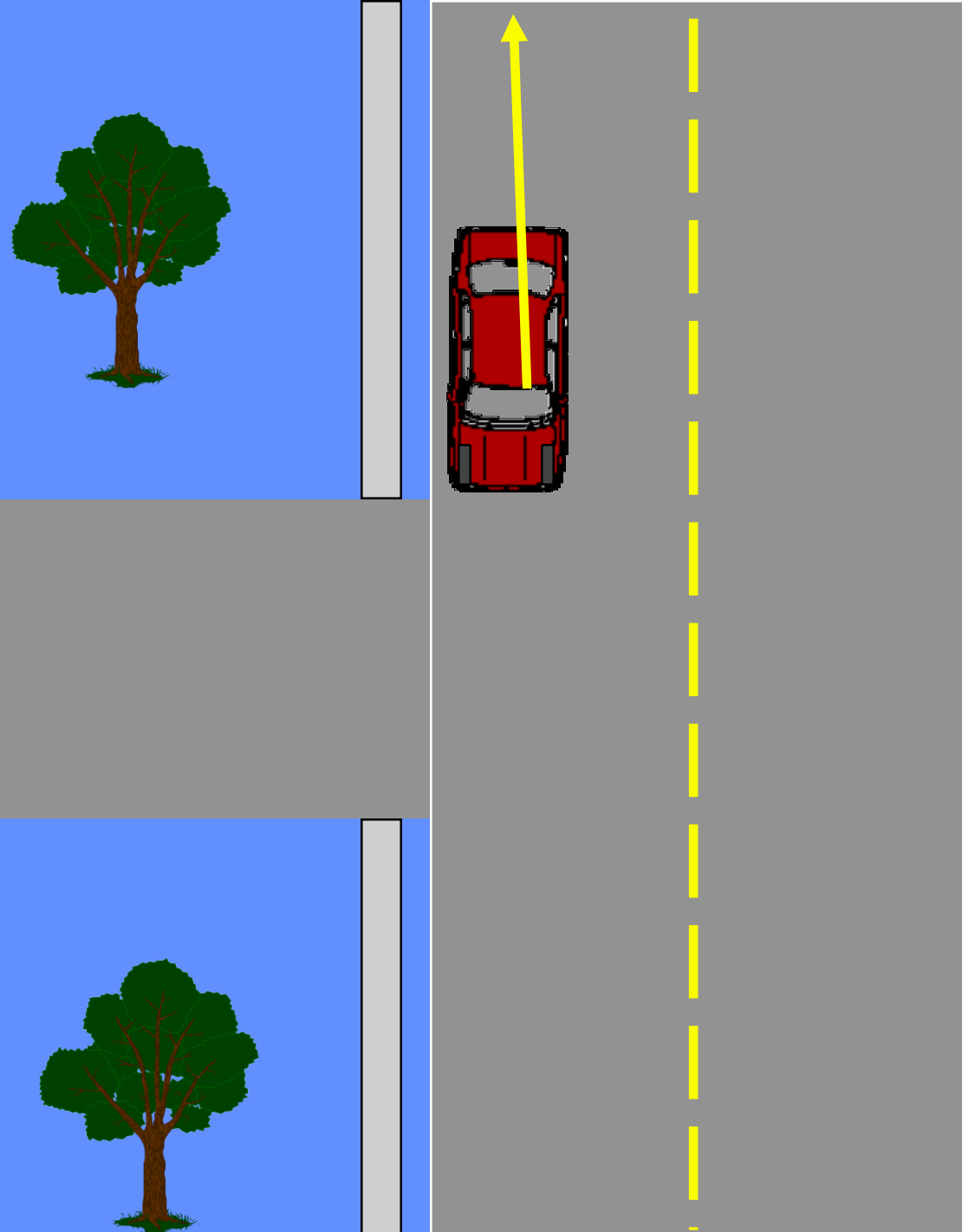
# Straighten

- Reference point is the center of the rear window at the edge of the curb.
- Straighten the wheels and keep about 12 inches from the curb or edge of the road.



# Target

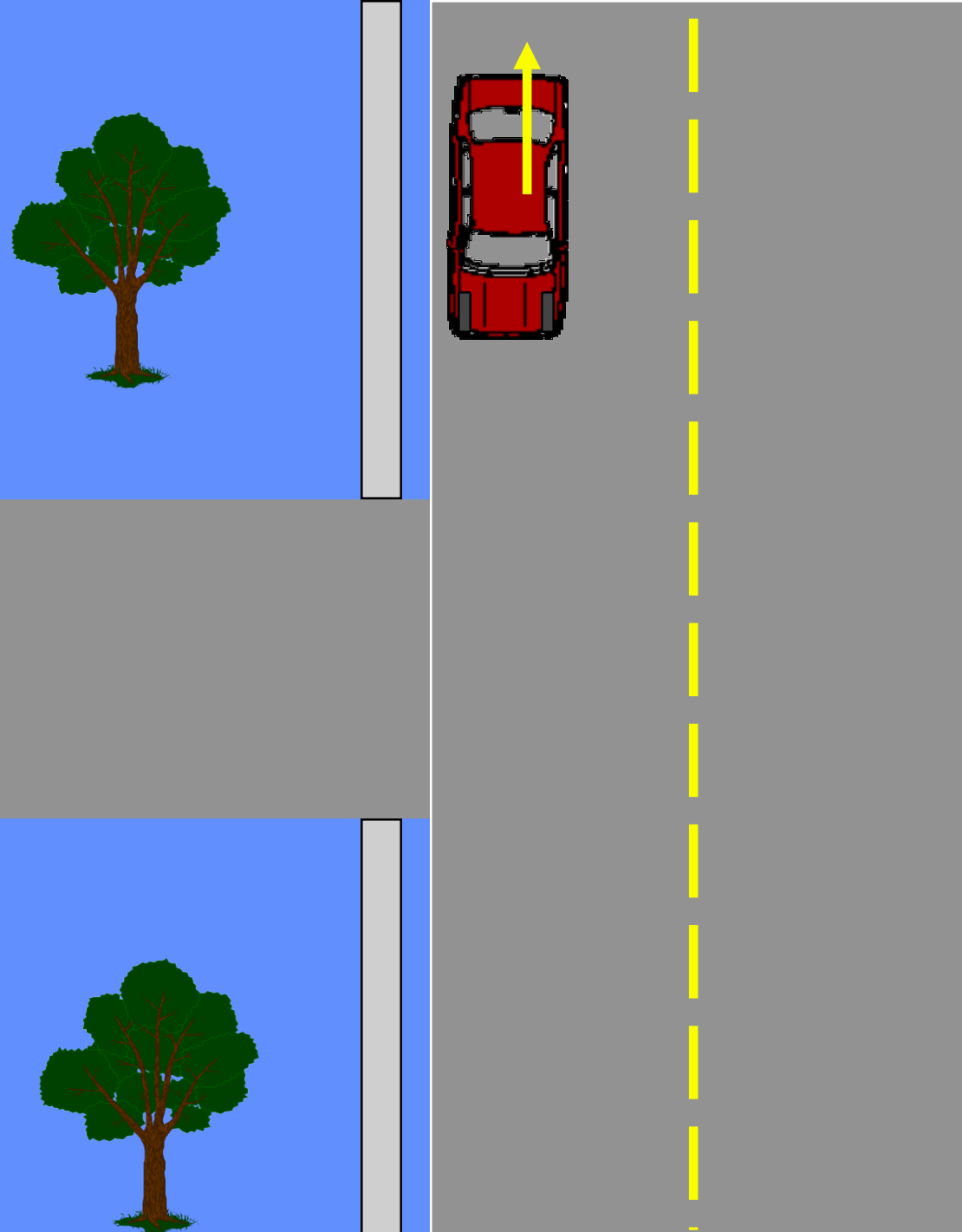
- Target the center of the parking lane backing slowly.
- Scan 12 seconds straight down the road to the rear.
- Stop and yield to any approaching traffic.





# Stopping

- As you back you can glance to the front or sides, but keep your primary vision to the rear.
- When stopping keep your vision out the rear window at your target until stopped!



# WHAT IS THE MOST IMPORTANT PART OF BACKING OUT OF A DRIVEWAY?

- Stopping prior to entering the cross street to check for and yield to pedestrians and traffic.

